

Social Housing

Product Guide for Floors, Walls & Accessories

gerflor.co.uk
gerflor.ie
gradus.com



Gerflor[®]

GRADUS

Flooring Solutions

Gerflor's housing collections contain carefully selected residential and commercial products. The product ranges are designed for both refurbishment and new build projects, catering to different areas within buildings, including for inside and outside the threshold.

Gerflor products are sustainable, innovative, and cost-effective to install. They prioritise safety, comfort and hygiene, making them a popular choice with landlords, tenants and homeowners. We are so confident in the quality of our products that we offer free trial areas for new customers.

For more information, please contact us. *Please note that terms and conditions apply to this offer.

**Free Trial
Areas
Available***



Sustainable & Innovative Flooring Collections

Contents

Fundamentals	4
A Combined Business	6
Stock Delivery	8
Environment	10
Supply Chain and Project Management	12
Flooring & Wall Covering Product Matrix	14
Area Design	16
Collections	
Griptex	18
UPDATED Texline	20
Nerok 70/55	22
Creation 55 LVT	24
Creation 30 LVT	26
NEW Tarasafe H ₂ O	28
Latour ²	30
REFRESHED Tarasafe Impression	32
Mural Revela Wall Covering Formats	34
Mural Revela	36
Mat-in-a-Box [®] 1550	38
Boulevard [™] Stripe	40
Boulevard [™] 7000	42
Boulevard [™] 6000	44
Boulevard [™] 5000	46
Boulevard [™] 1500	48
Stair Edgings	50
Case Studies	
DIY SOS - Nightsafe, Blackburn	54
The Roots Foundation, Wales	56
Havannah House, Glasgow	58
Park Hill Flats, Sheffield	60
Services	62
Suppliers	64
Contacts	65

Gerflor[®]

GRADUS

Fundamentals

A Fusion of Products & Values

Gerflor and Gradus offer products which are ideal for use in a wide variety of applications including healthcare, commercial office, education, retail, hospitality & leisure and housing. Products can be combined to provide a complete package that balances performance, aesthetics and cost, alongside environmentally responsible manufacturing processes.

A Fresh Approach

We believe passionately in providing the customer with the very best in terms of service. Through our combined team we can offer expert advice to help with product selection backed up with extensive UK stocks to ensure our products are delivered on-time, every-time.



Gerflor & Gradus

As a combined business, Gerflor and Gradus are the perfect partner for your housing projects. We have over 80 years' experience in this sector and we have innovative and sustainable solutions for social housing environments. Our low cost "on the floor" solutions save you time and money, are slip resistant and meet HSE ≥36 guidelines.

They are also extremely easy to install and our floorings are tough and durable, loved and wanted by tenants and home owners alike! Complementary Gradus Accessories including Stair Edgings, Floor Trims, Entrance Matting and Wall Protection solutions are also available for a complete package.

Stock Delivery

The Gerflor group of companies is a collaboration of well known and successful brands

Gerflor

Gerflor has an extensive warehousing and distribution facility based in Winsford. This logistical hub is geared to have sufficient capacity to offer a broad range of in-depth, best-selling stock for the housing sector. Through our network of dedicated distribution partners, we are also able to in collaboration, deliver an enhanced service level to our customers. You can depend on us, when you need fast delivery for last minute refurbishments and new build projects. Our housing collections are also competitively priced and do not compromise on the required quality you desire for your housing needs.

Gradus

At Gradus we aim to provide peace of mind for all our customers, through quality, performance and service that you can rely on. Whether it's offering advice on product selection, guaranteeing product performance or delivering the right product to the right place at the right time, we are committed to reducing risk for our customers. In every aspect of our UK manufacturing activities, we take responsibility for the environment, and meet our businesses and customers' needs without compromising our long-term future environment.





HSE
36+

SLIP RESISTANCE



PERFECT FOR RENOVATION



QUICK TURNAROUND



MAINTENANCE COST SAVINGS



COMFORT



Quiet



Underfoot comfort



R10
Slip-resistant



Water-resistant

Environment

Sustainable, innovative & kinder for the environment

We care. We act.

GFT is a patented backing system from Gerflor, made from more than 95% recycled plastic bottles. It is also 100% recyclable.



1m² = 

Cost effective flooring

Revolutionary looselay technology that saves you time and money. Reduces the need for adhesives and minimal sub-floor preparation is required.



Recycled technical fibre backing made up of plastic bottles.

Gerflor teams have always considered customers and the environment as their absolute priorities. Our floor coverings, wall solutions and finishing components are user friendly, healthy solutions. They are designed with respect for our planet, to last as long as possible with proposed end-of-life options. From product design through end-of-life, the circular economy is a core priority for the group. We have determined 5 priority commitments to guide our environmental management up to 2025.

We care. We act.

Our commitments for a sustainable future



CARBON FOOTPRINT*

-20% kg CO₂ equivalent/m² between 2020 and 2025



BIOSOURCED CONTENT**

10% by 2025



RECYCLED CONTENT

30% by 2025



ADHESIVE FREE***

35% by 2025



ANNUAL VOLUME RECYCLED

60,000 t by 2025

*Scopes 1 & 2 defined in the GHG protocol **% of activity with biosourced materials ***% of activity with adhesive free solutions.



Supply Chain & Project Management

The Gerflor group of companies have over 80 years dedicated experience in the housing sector. The service teams are available and on hand to help and assist with the management of your supply chain and projects. We work with all types of clients, including Housing Associations and Local Authorities, Tenants and Owners, Main Contractors, Installers, Architects and Specifiers.

Whether it's technical advice, pricing support or specification and trial areas you are interested in, we can assist. We take great pride in our teams and the service we deliver to ensure that your projects are delivered on time and to budget. Contact us for further information.



- ✓ Decorative floorings that tenants like
- ✓ Fast, low-cost installation
- ✓ Tenant satisfaction
- ✓ Easy refurbishment
- ✓ Less remedial work
- ✓ Meets HSE guidelines



- ✓ Great choice of designs
- ✓ Easy maintenance
- ✓ Comfortable, quiet, slip resistant
- ✓ Eco-friendly products



- ✓ Time & cost saving installation
- ✓ Loose-lay over existing surfaces
- ✓ Minimal subfloor preparation
- ✓ No specialist tools

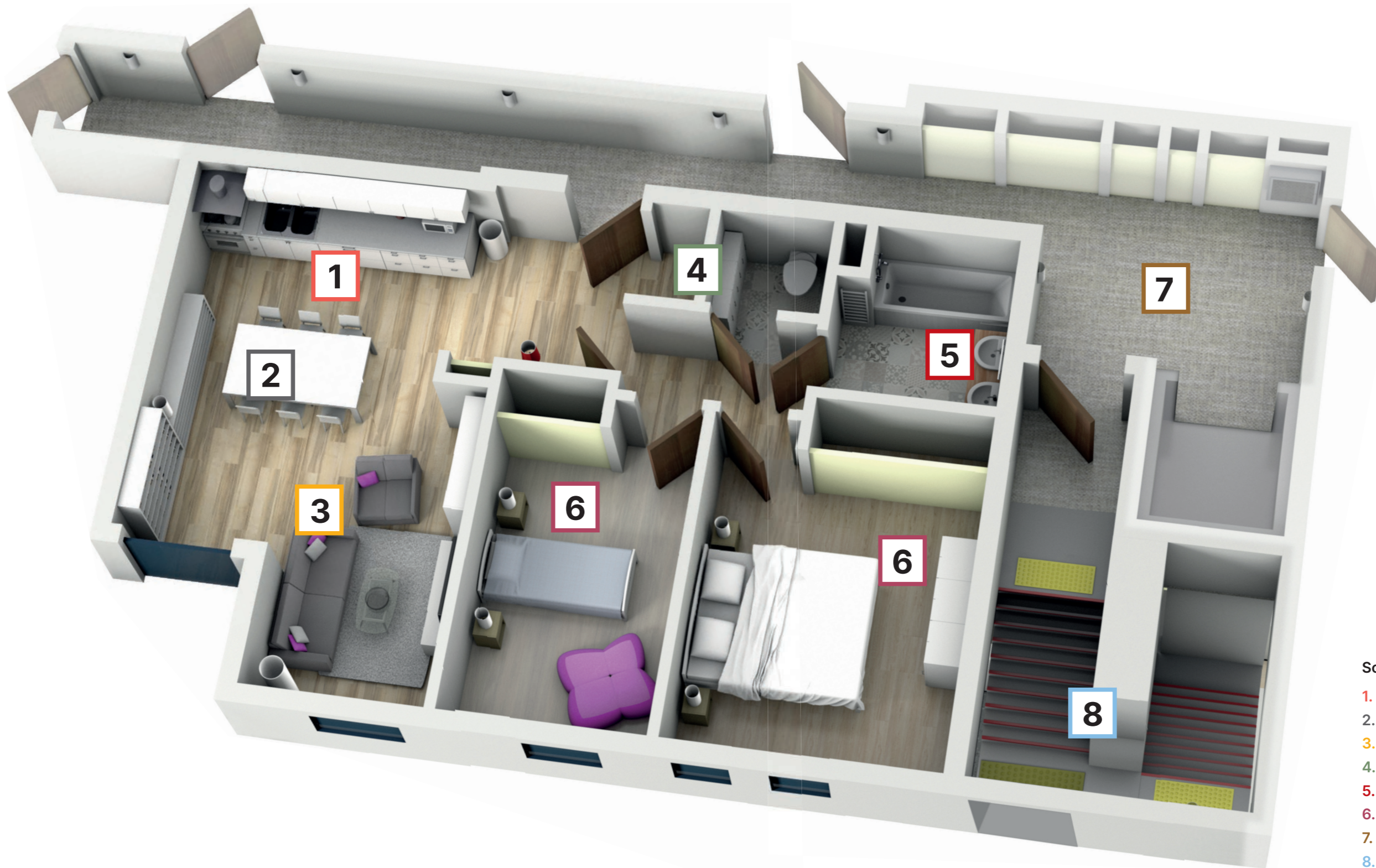


Flooring & Wall Covering Product Matrix

Product	Kitchens	Dining Rooms	Living Areas
Griptex	✓	✓	●
Texline	✓	✓	✓
Nerok 70/55	●	✓	●
Creation 55 LVT	✓	✓	✓
Creation 30 LVT	✓	✓	✓
Tarasafe H ₂ O	-	-	-
Latour ²	-	-	-
Tarasafe Impression	●	-	-
Mural Revela Wall Covering	✓	-	-
Mat-in-a-Box [®] 1550	-	-	-
Boulevard Stripe	-	-	-
Boulevard 7000	-	-	-
Boulevard 6000	-	-	-
Boulevard 5000	-	-	-
Boulevard 1500	-	-	-
Stair Edgings	-	-	-

Key: ✓ Recommended ● Alternative

Wet Rooms	Bathrooms	Bedrooms	Corridors - Landings - Stairs	Entrances
-	✓	●	-	-
-	✓	✓	-	-
-	✓	-	✓	-
-	-	✓	✓	-
-	-	✓	-	-
✓	-	-	-	-
-	-	-	✓	-
-	●	-	✓	-
✓	✓	-	-	-
-	-	-	-	✓
-	-	-	-	✓
-	-	-	-	✓
-	-	-	-	✓
-	-	-	-	✓
-	-	-	-	✓
-	-	-	✓	-



Solutions:

- 1. Kitchens
- 2. Dining Rooms
- 3. Living Areas
- 4. Wet Rooms
- 5. Bathrooms
- 6. Bedrooms
- 7. Corridors - Landings - Stairs
- 8. Entrances

Areas

Kitchens, Dining Rooms & Bathrooms

Griptex

Griptex is a warm and comfortable loose lay vinyl flooring with a Gerflor Fibre Technology backing, specifically designed for refurbishment and perfect for social housing applications.



Waterproof



Design options to choose from



Hygienic



Warm & comfortable



Slip resistant technology



Quiet underfoot



Looselay*
*no glue up to 35m²



2256 Opera Medium



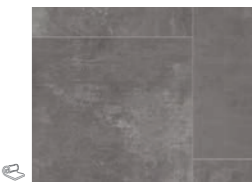
0405 Chene Medium



0496 Ardoise Black



0836 Verone Grey



1284 Verone Light Grey



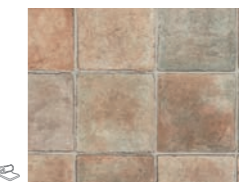
1104 Cajou Nut



1237 Cajou Sun



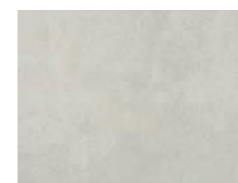
2262 Lux Brown



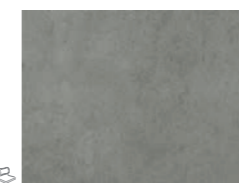
0447 Cassiopee Grass



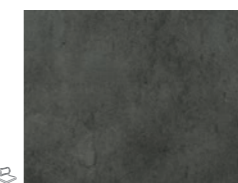
0873 Offset Beige



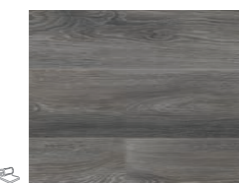
2257 Shade Light



2259 Shade Medium Grey



2261 Shade Dark Grey



2266 Empire Grey



2263 Savannah Sand



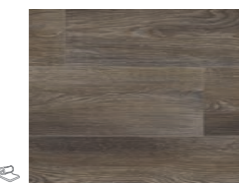
2265 Savannah Clear



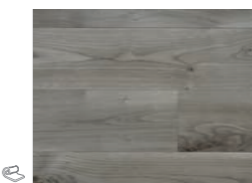
2258 Hudson Grey



1205 Oxyd Anthracite



2260 Empire Dark Brown



2264 Savannah Medium

T Wear Group

HSE 36+ Slip Resistant

R10 Slip Resistant

16dB Quiet Underfoot



Pureclean GripX

For more information or to see the full range visit www.gerflor.co.uk

Areas

Kitchens, Dining Rooms, Living Areas, Bathrooms & Bedrooms

Texline

Texline is a tough vinyl flooring with a unique patented textile backing system that gives higher warmth and comfort underfoot and is safer, quieter and more hygienic than standard vinyl flooring.



Waterproof



Easy to install



Easy to clean & maintain



Warm & comfortable



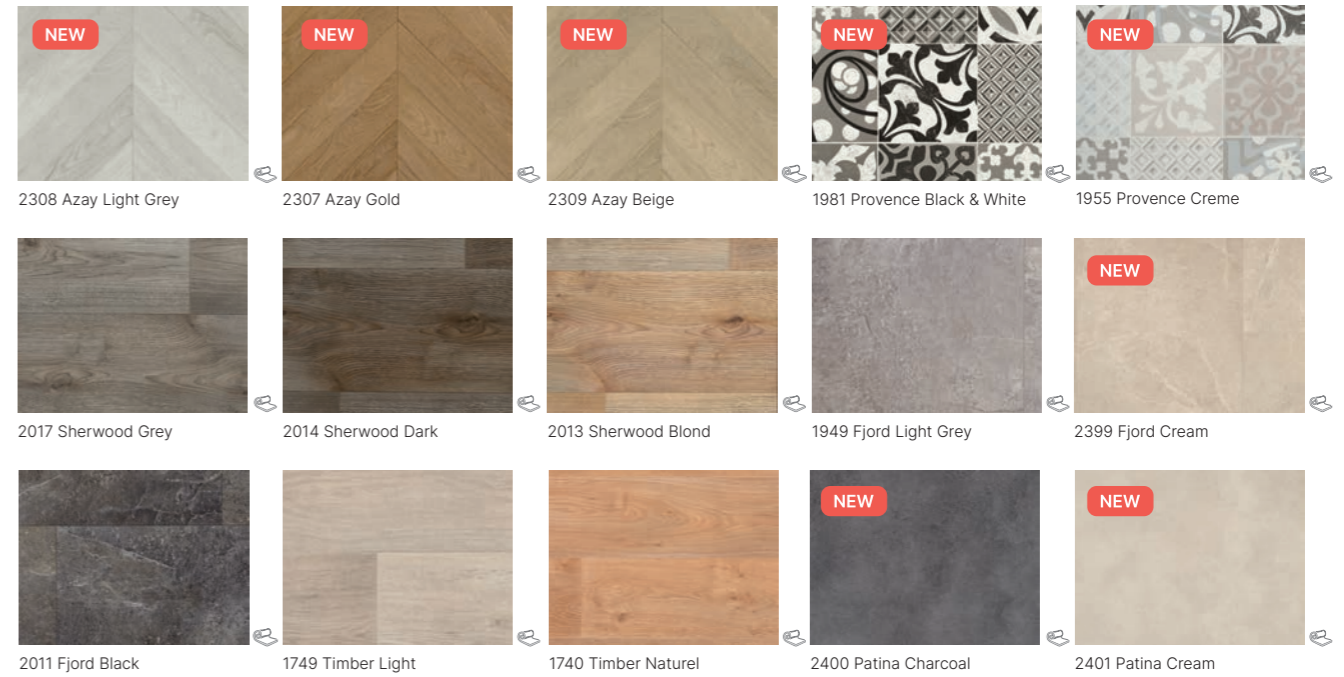
Slip resistant technology



Quiet underfoot



Looseley*
*no glue up to 35m²



T Wear Group

R10
Slip Resistant

16dB
Quiet Underfoot



Pureclean

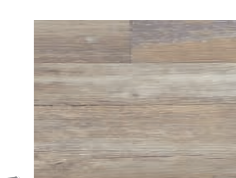
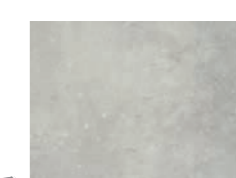
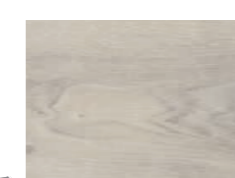
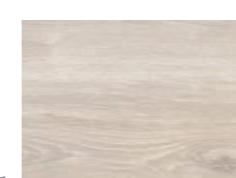
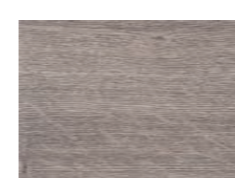
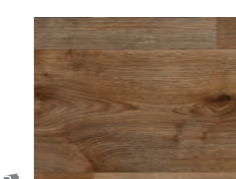
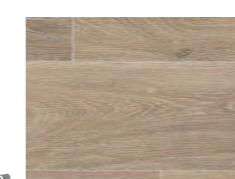
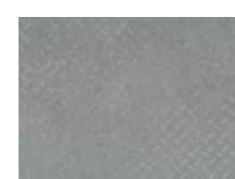
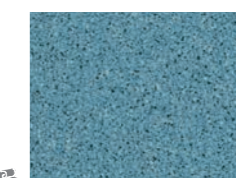
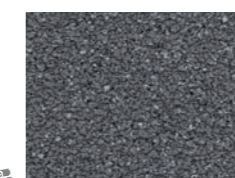
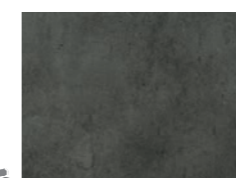
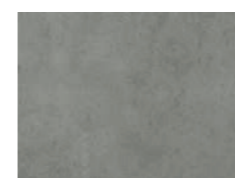
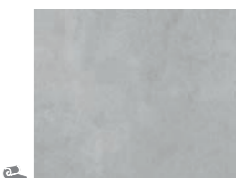
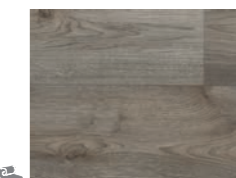
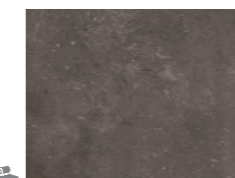
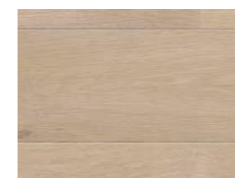
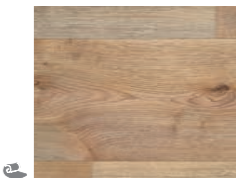
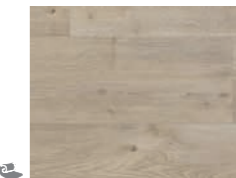
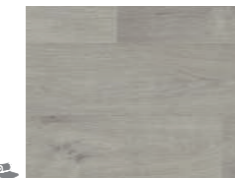
For more information or to see the full range visit www.gerflor.co.uk

Areas

Dining Rooms, Bathrooms & Corridors - Landings - Stairs

Nerok 70/55

The Nerok 70/55 collection is a rich palette of extensive wood and mineral designs. The products have added realism with exclusive embossing and an ultra matt surface.



0.7mm Wear Layer

0.55mm Wear Layer

T Wear Group

R10 Slip Resistant

19dB Quiet Underfoot Comfort



PUR+

For more information or to see the full range visit www.gerflor.co.uk

Areas

Kitchens, Dining Rooms, Living Areas, Bedrooms & Corridors - Landings - Stairs

The Creation 55 LVT collection is environmentally friendly and offers improved indoor air quality performance. This is great for when low maintenance and easy installation is required and decreased life-cycle costs are an absolute must.

Creation 55 LVT

**100%
RECYCLABLE**

100%
recyclable



Easy to
install



Easy to clean
& maintain



Realistic
embossing



Slip resistant
technology



Durable



0347 Ballerina



0436 Riverside



0503 Quartet



0374 Parker Station

0347 Ballerina DB SC RA	0436 Riverside DB SC RA	0503 Quartet DB SC RA	0374 Parker Station DB SC RA	0584 White Lime DB SC RA
0504 Twist DB SC RA	0461 Michigan DB SC RA	0448 Malua Bay DB SC RA	0848 Swiss Oak Beige DB SC RA	0445 Rustic Oak DB SC RA
0859 Quartet Fauve DB SC RA	0441 Honey Oak DB SC RA	0796 Swiss Oak Golden DB SC RA	0846 Swiss Oak Pearl DB SC RA	0455 Long Board DB SC RA
0870 Quartet Honey DB SC RA	0456 Ranch DB SC RA	0851 Bostonian Oak Honey DB SC RA	0853 Bostonian Oak Beige DB SC RA	1274 Lounge Oak Chestnut DB SC RA
1275 Curton Stone Light Grey DB SC RA	1276 Curton Stone Light Beige DB SC RA	0618 Carmel DB SC RA	0868 Bloom Uni Taupe DB SC RA	0869 Bloom Uni Grey DB SC RA



ProtecShield™

0.55mm

Wear
Layer

T Wear
Group

R10
Slip Resistant

DB
Dryback

SC
Solid Clic

RA
Rigid Acoustic

For more information or to see the full range visit www.gerflor.co.uk

Areas

Kitchens, Dining Rooms, Living Areas & Bedrooms

The Creation 30 LVT collection is a synthetic, decorative, flexible, antistatic abrasion group T floorcovering. Available in tile or plank, with bevelled edges, providing softness and a comfortable surface.

Creation 30 LVT



Durable



Easy to clean & maintain



Realistic embossing



100% RECYCLABLE
100% recyclable



Slip resistant technology



Easy to install

0869 Bloom Uni Grey DB SC RA	0849 Cedar Pure DB SC RA	1296 Oak Fantasy Honey DB SC RA	0618 Carmel DB SC RA	0447 Amador DB SC RA
0850 Cedar Brown DB SC RA	0853 Bostonian Oak Beige DB SC RA	0456 Ranch DB SC RA	0848 Swiss Oak Beige DB SC RA	0445 Rustic Oak DB SC RA
0809 Chevron Hurricane DB	0441 Honey Oak DB SC RA	0846 Swiss Oak Pearl DB SC RA	0347 Ballerina DB SC RA	0455 Long Board DB SC RA
1295 Oak Fantasy Grey DB SC RA	1292 Braukerne Natural DB SC RA	1287 Salento Light Grey DB SC RA	1283 Urban Street Light DB	1291 Oppland Stone DB
1275 Curton Stone Light Grey DB SC RA	1276 Curton Stone Light Beige DB SC RA	0436 Riverside DB SC RA	0868 Bloom Uni Taupe DB SC RA	0374 Parker Station DB SC RA

Tile |
 Plank |
 ProtecShield™ |
 0.3mm |
 Wear Layer |
 T Wear Group |
 R10 Slip Resistant |
 DB Dryback |
 SC Solid Clic |
 RA Rigid Acoustic

For more information or to see the full range visit www.gerflor.co.uk

Areas


Wet Rooms


Tarasafe H₂O is a non-studded high performance slip resistant safety flooring for wet and dry, barefoot and shod applications. This enhanced slip resistant safety vinyl floor covering is an ideal solution for applications where there are continuous wet areas such as showers, wet rooms, and bathrooms.





0033 Rhine


Tarasafe H₂O


- 

Hygienic
- 

Easy to clean & maintain
- 

Ideal solution wet rooms
- 

Slip resistant technology
- 

Durable
- 

Barefoot & Shod use



0036 Lagoa



0025 Nile



0032 Malawi



0031 Eacham



0034 Zambezi



0033 Rhine



0024 Peyto



0035 Bacalar

The Dementia Services Development Centre at the University of Stirling has approved Tarasafe H₂O for use within a dementia-inclusive environment



HSE 36+ Slip Resistant

R11 Slip Resistant

20 Roughness
RTM / RZ



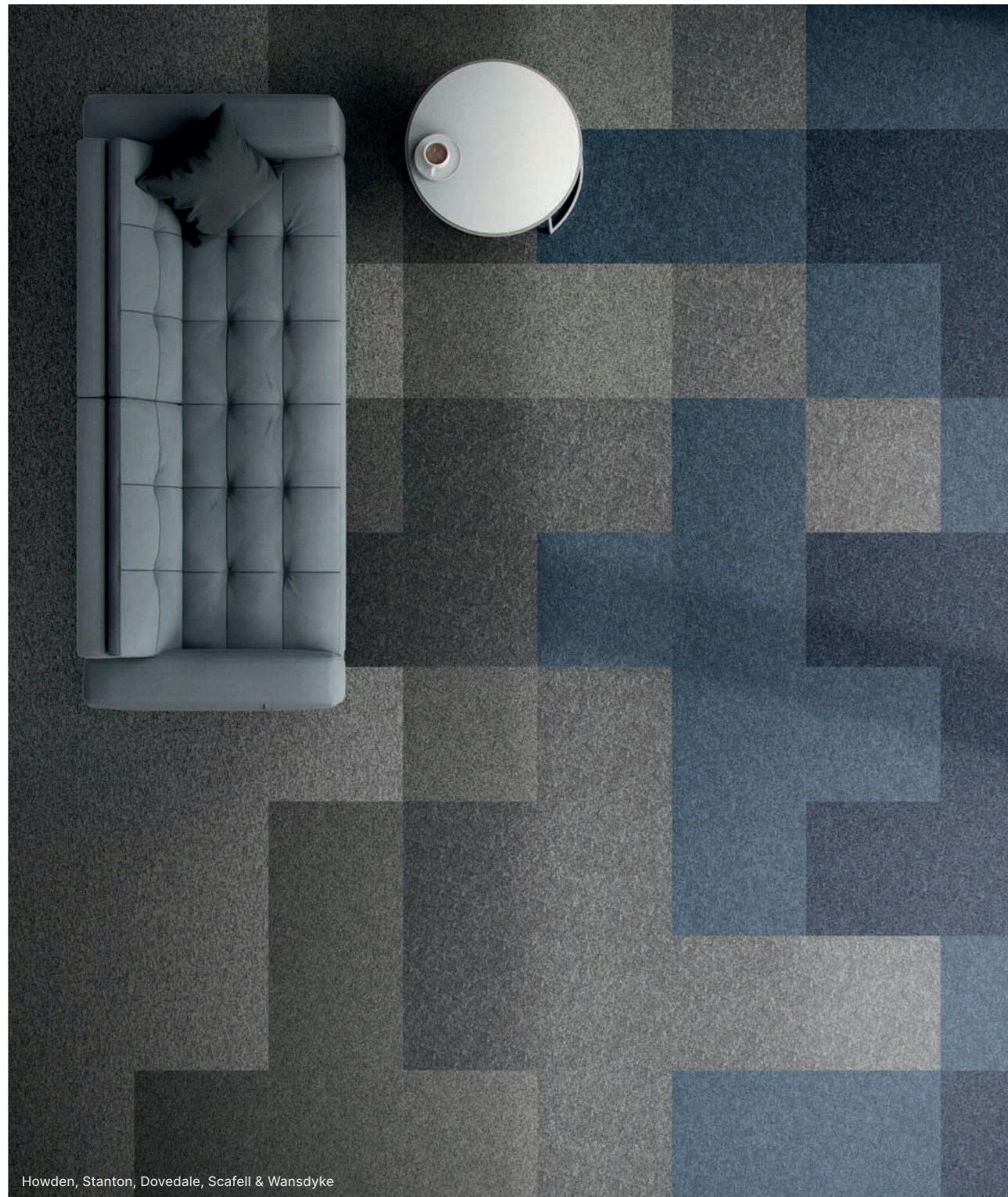
SparClean®

For more information or to see the full range visit www.gerflor.co.uk

Areas





Corridors - Landings - Stairs

Latour² is a solution-dyed, nylon carpet tile range, that comprises plains and stripes. These can be used alone or can work together, to create interesting and unique floor schemes.



Howden, Stanton, Dovedale, Scafell & Wansdyke

Latour²

- 10**
YEARS
10 year warranty
- 
Loop pile carpet tile
- 
Plains & stripes
- 100%**
Solution dyed nylon
- 
Durable
- 
Quiet underfoot

 01243 Plains - Howden	 08943 Plains - Stanton	 06043 Plains - Dovedale	 05143 Plains - Scafell	 00143 Plains - Wansdyke
 04143 Plains - Cairngorm	 01043 Plains - Cheviot	 00500 Stripes - Alston	 00243 Plains - Coniston	 07143 Plains - Glenavon
 01143 Plains - Langdale	 00300 Stripes - Morden	 00900 Stripes - Stanage	 00400 Stripes - Staffin	 04043 Plains - Arfon



For more information or to see the full range visit www.gradus.com

Areas

Corridors - Landings - Stairs

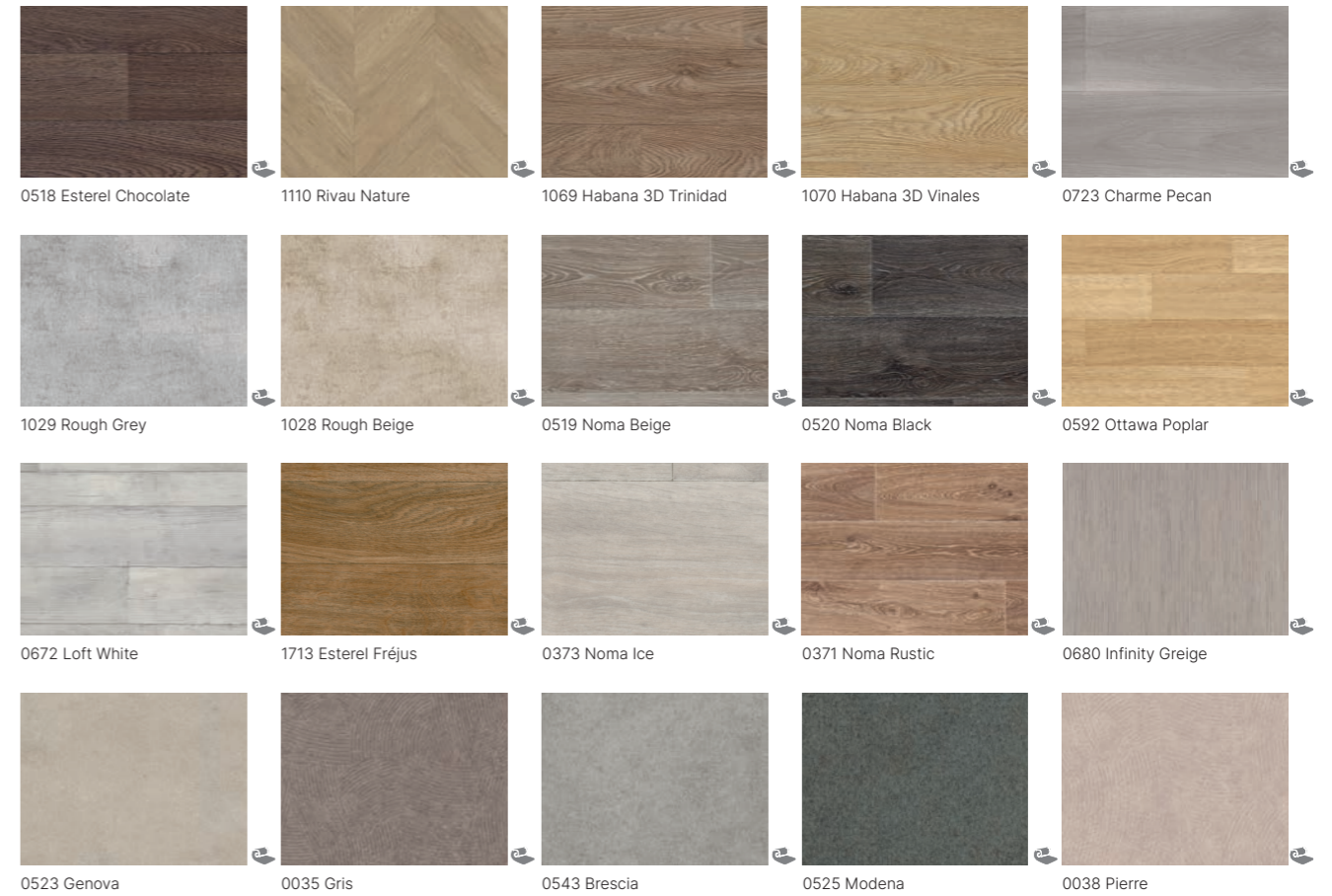
Tarasafe Impression is a stunning safety collection of modern and contemporary designs suitable for medium/heavy traffic areas. Safety flooring that is slip resistant, tough and offers outstanding performance.



0518 Esterel Chocolate

Tarasafe Impression*

- 
 Hygienic
- 
 Easy to install
- 
 Easy to clean & maintain
- 
 High traffic resistance
- 
 Slip resistant technology
- 
 Durable



*Tarasafe Impression Safety Flooring replaces Taralay Impression Control.

- | | | | | | |
|--------------|---------------------------|-----------------------|--------------------------|---------|-----------------------|
| T Wear Group | HSE 36+
Slip Resistant | R11
Slip Resistant | 20 Roughness
RTM / RZ | Compact | ProtecSol®
Control |
|--------------|---------------------------|-----------------------|--------------------------|---------|-----------------------|

For more information or to see the full range visit www.gerflor.co.uk

Colour	Code	65 × 37.5cm	90 × 260cm
Kampala	7915	✓	✓
Zanzibar	7053	✓	✓
Liverpool	7911	✓	✓
Baeza	7869	✓	✓
Boulia Gloss	7097	✓	✓
Vilnius	7007	✓	✓
Alanya	7032	✓	✓
Tanami Gloss	7029	✓	✓
Ubeda	7868	✓	✓
Colima	7052	✓	✓
Kamina	7091	✓	✓
Corabia	7035	✓	✓
Ampara	7093	✓	✓
Hanoi	7918	✓	✓
Derby Gloss	7059	✓	✓
Sarti	7072	✓	✓


120 × 260cm	Matt	Gloss
-	✓	-
-	✓	-
-	✓	-
-	✓	-
-	-	✓
-	✓	-
✓	✓	-
✓	-	✓
✓	✓	-
-	✓	-
✓	✓	-
-	✓	-
-	✓	-
-	✓	-
-	-	✓
-	✓	-


Areas


Kitchens, Wet Rooms & Bathrooms


Mural Revela


The Mural Revela wall covering collection consists of two sizes: tiles and XL panels. They share the elegant V-groove that gives Mural Revela its realistic and unique look and feel. The tiles and XL panels can be easily combined.

- 

Different size options
- 

Waterproof
- 

Easy to install
- 

Warm & comfortable
- 

Tongue & groove



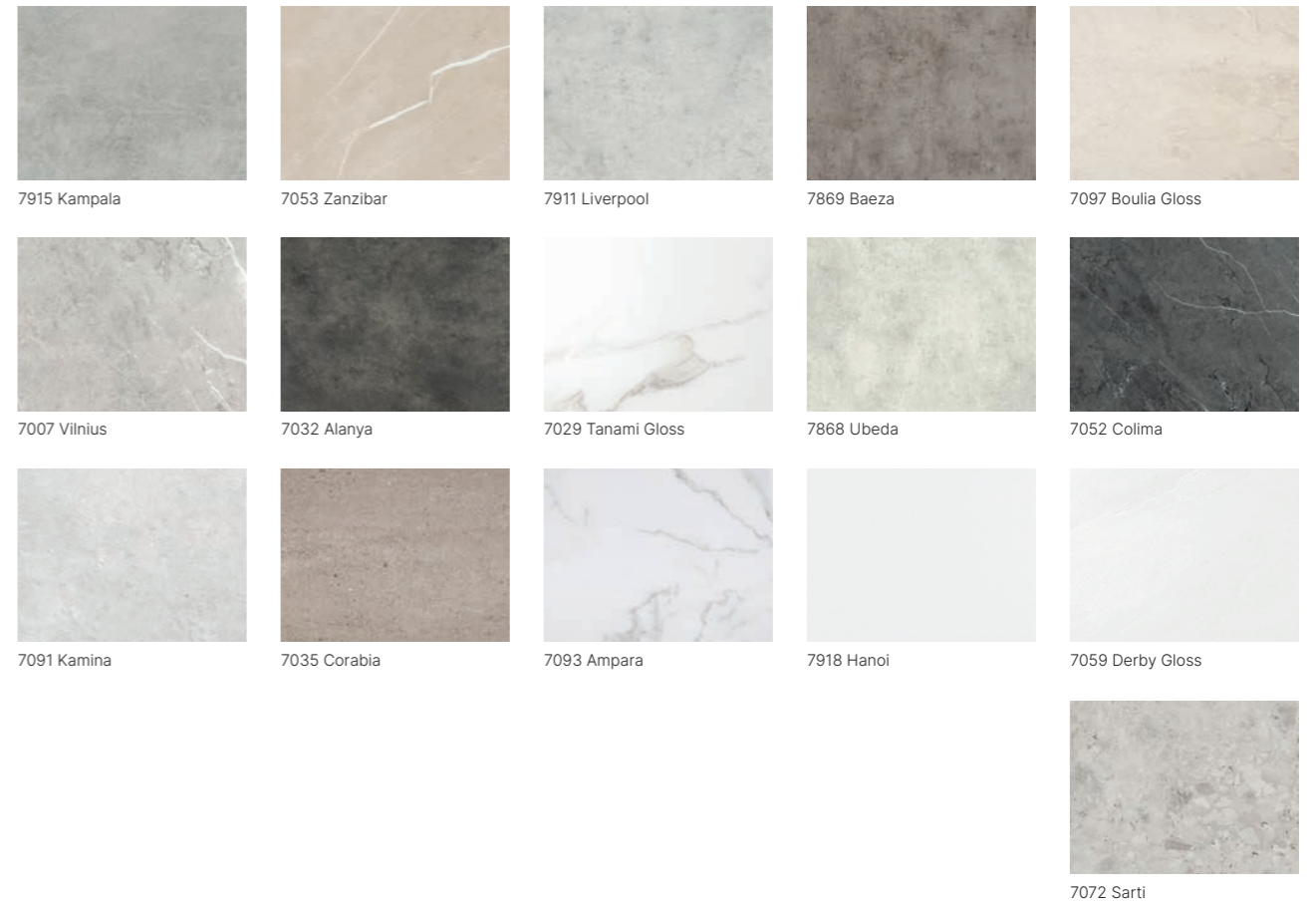
7915 Kampala



7053 Zanzibar



7911 Liverpool



Protective PU top coat | RCB Patented Rigid Core Board Technology | Glued installation | 5mm Thick | Realistic multicoloured film | Stocked for quick delivery

For more information or to see the full range visit www.masq.be/masq-eng.html

Areas

Entrances







Mat-in-a-Box® 1550 is a modular barrier matting system that is quick and easy to install. The individual sections clip together on-site for simple assembly. An effective matting system that retains dirt and moisture, improving the appearance of internal floor coverings and preventing unnecessary replacements.



Black base with Calculus wiper

GRADUS

Mat-in-a-Box® 1550

- 
5 year warranty
- 
Soil resistance
- 
High performance
- 
Moisture retention
- 
Durable
- 
Medium traffic

Wiper Colour Options



Tempestas



Calculus



Terra

Base Colour Options



Glacier (grey)
(shown with Calculus wipers)



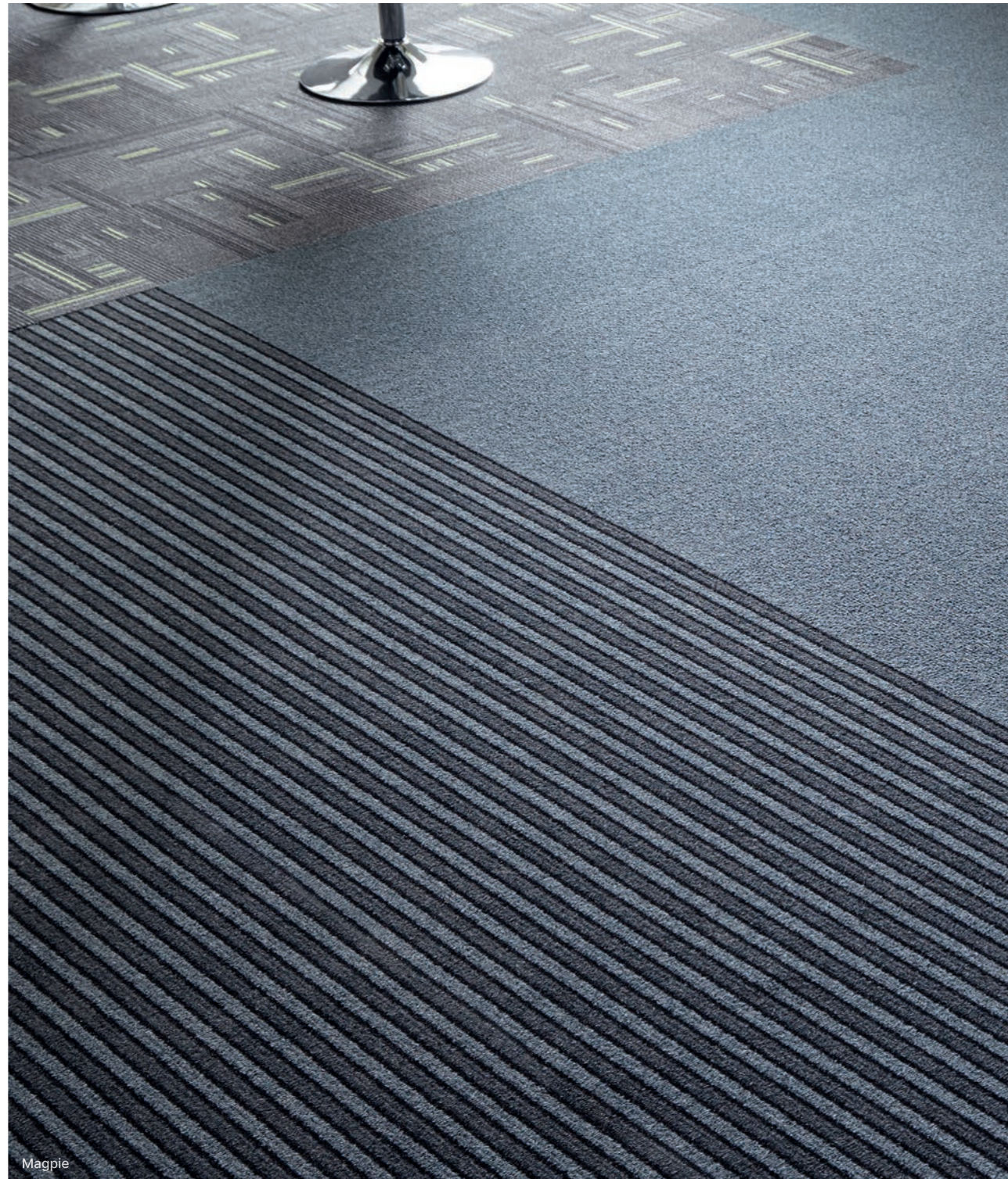
Black
(shown with Tempestas wipers)

For more information or to see the full range visit www.gradus.com

Areas

Entrances

Boulevard™ Stripe can be used in conjunction with a primary or hybrid barrier mat and in some situations can be used as stand-alone matting or in conjunction with a secondary barrier matting. It is also ideal for use in any area of a building prone to soil and moisture damage.



Magpie

GRADUS

Boulevard™ Stripe

- 5 YEARS**
5 year warranty
- Soil resistance
- High performance
- Moisture retention
- Durable
- High traffic resistance



Magpie



Raven

*Note: Boulevard Stripe is not recommended for use on staircases

For more information or to see the full range visit www.gradus.com

Boulevard™ 7000 features a linear design and incorporates a heavy scraper fibre for optimum dirt removal, whilst offering excellent moisture retention properties.



Black Ash

10
YEARS
10 year
warranty

Soil
resistance

High
performance

Moisture
retention

Durable

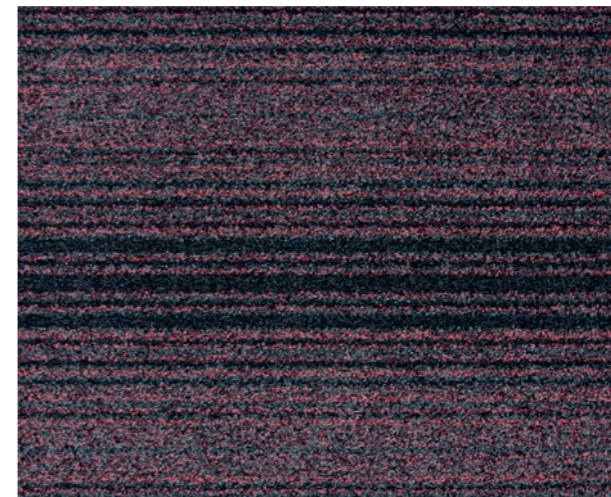
High traffic
resistance



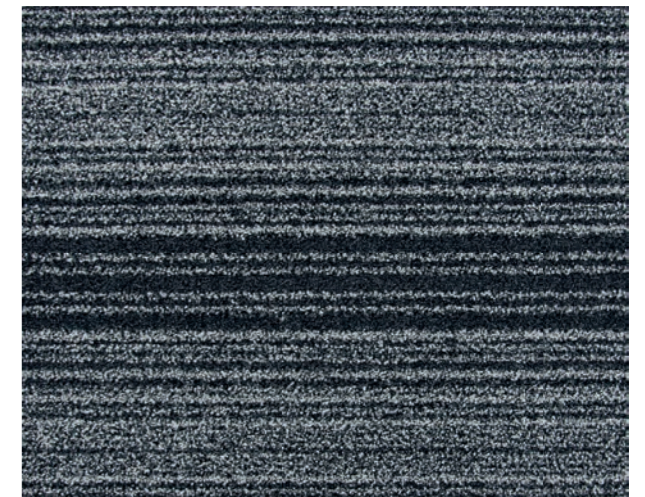
Black Ash



Hazelnut



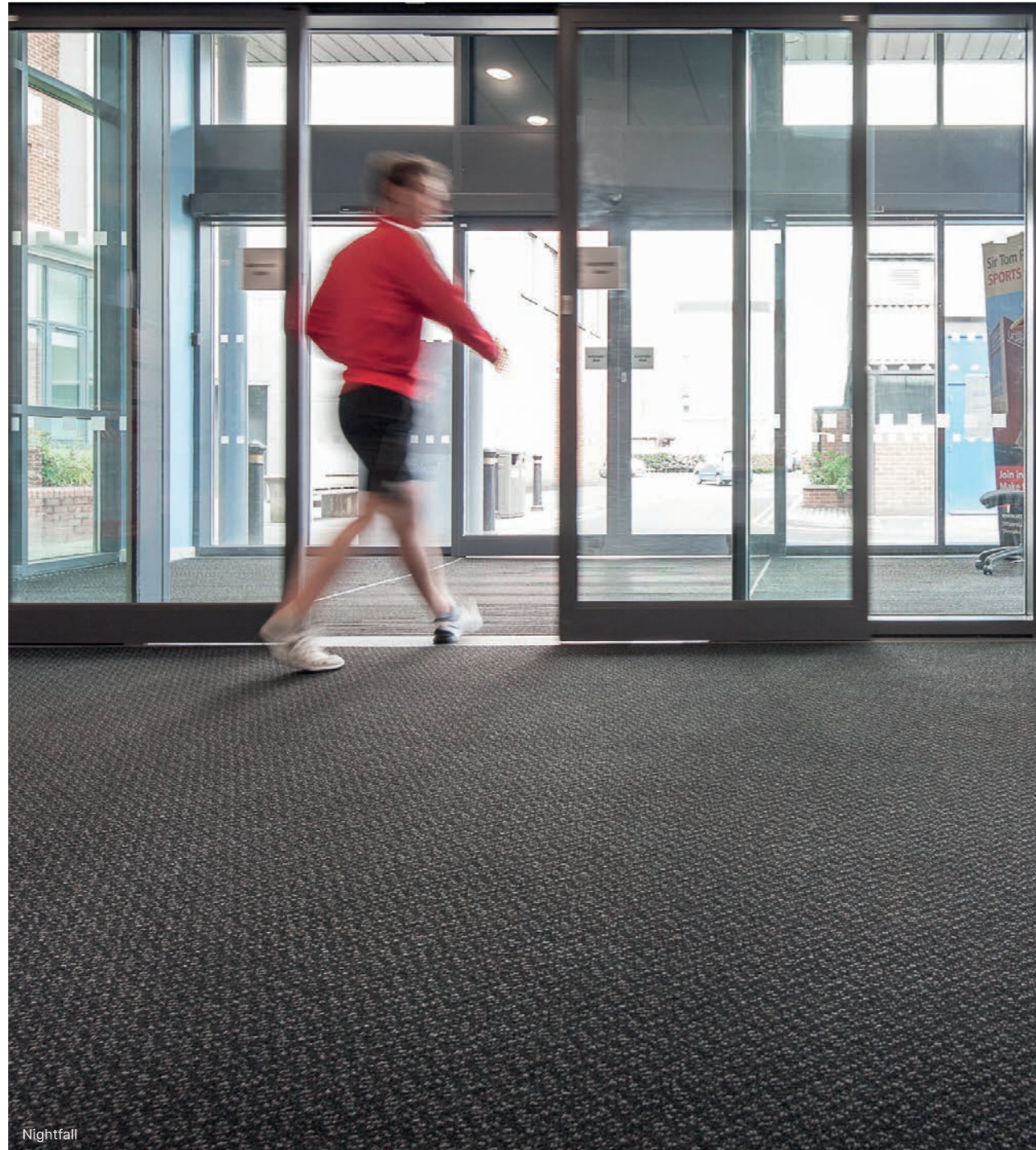
Red Oak



Gray Birch

For more information or to see the full range visit www.gradus.com

Boulevard™ 6000 features a patterned design to disguise the effects of soiling, whilst incorporating a heavy scraper for optimum dirt removal and moisture retention. It is easy to maintain and resistant to bleach solutions.



Nightfall

10
YEARS

10 year
warranty



Soil
resistance



High
performance



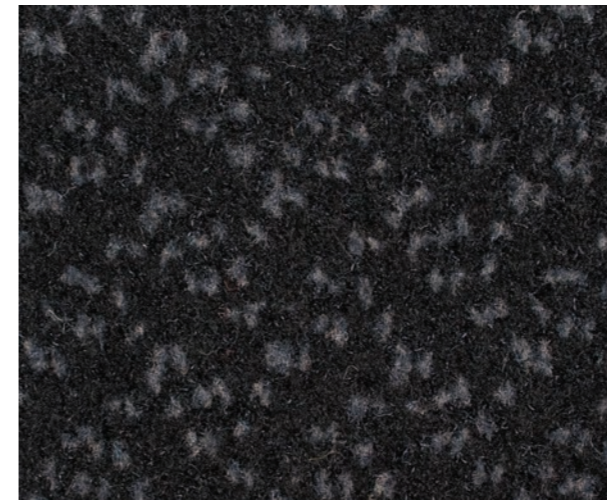
Moisture
retention



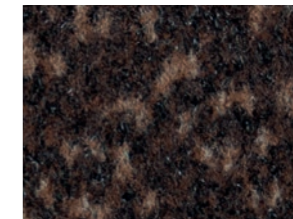
Durable



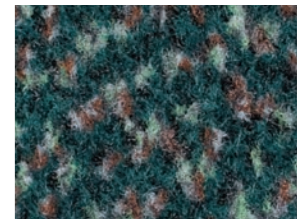
High traffic
resistance



Nightfall



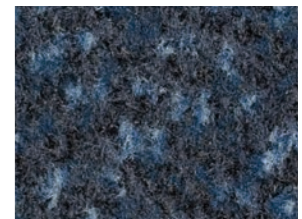
Walnut



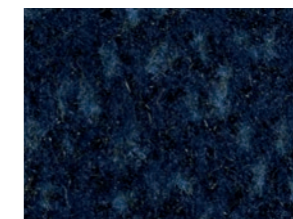
Rosemary



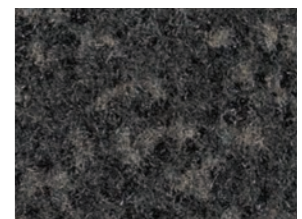
Galaxy



Indigo



Atlantic



Nickel

For more information or to see the full range visit www.gradus.com

Areas

Entrances







Boulevard™ 5000 is a high performance barrier matting which incorporates a light scraper for dirt removal and has been designed to disguise the effects of soiling. It also offers excellent moisture retention properties.

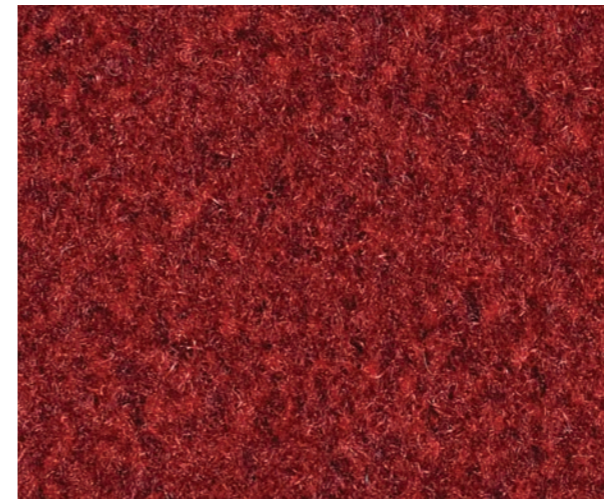


Redpoll

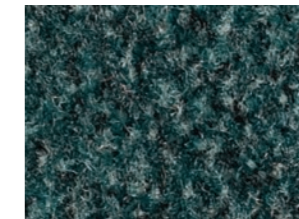
GRADUS

Boulevard™ 5000

- 
 5 year warranty
- 
 Soil resistance
- 
 High performance
- 
 Moisture retention
- 
 Durable
- 
 High traffic resistance



Redpoll



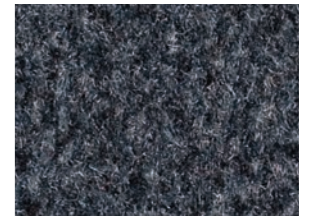
Shelduck



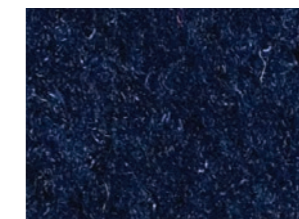
Corncrake



Cuckoo



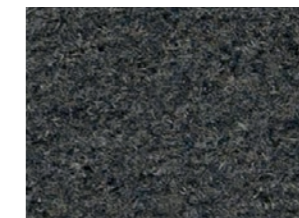
Kestrel



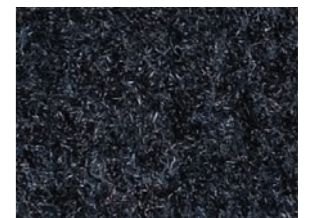
Swallow



Moorhen



Falcon



Jackdaw

For more information or to see the full range visit www.gradus.com

Areas

Entrances

Boulevard™ 1500 can be used in conjunction with a primary entrance mat and in some situations can be used as stand-alone matting in entrances and access points. The range is designed to complement Mat-in-a-Box® 1550 and Esplanade 1500 barrier matting. Contact us for further information on Esplanade 1500 product details.



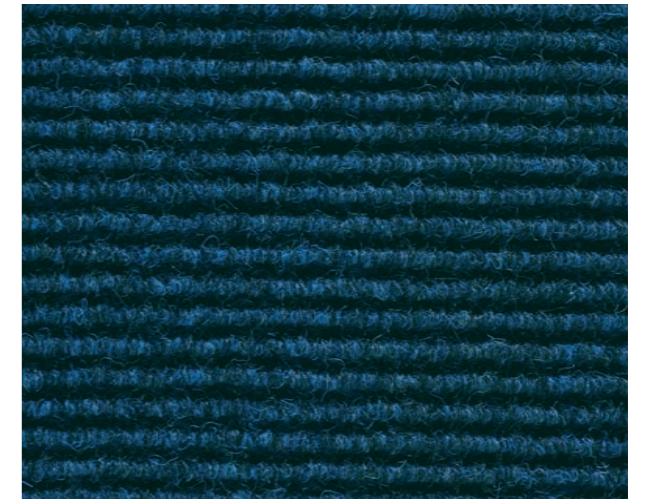
GRADUS

Boulevard™ 1500

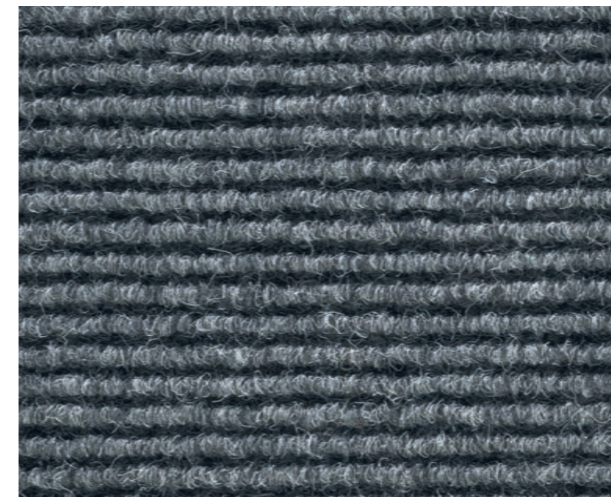
- Cost effective
- Easy to install
- Moisture retention
- Durable
- Static tested



Terra



Marinus



Calculus



Tempestas

For more information or to see the full range visit www.gradus.com

Areas

Corridors - Landings - Stairs

An extensive range of attractive and hard wearing stair edgings, with a choice of channels and slip-resistant inserts. Used in conjunction with floor coverings and suitable for social housing environments. Reduce accidents and risk of slips, trips and falls.



*Snowdrift


GRADUS

Stair Edgings

10
YEARS
10 year warranty


Slip resistant
+36


High performance


Durable


High traffic resistance



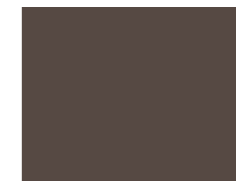
Jet
LRV: 4.56



Ink
LRV: 4.96



Burgundy
LRV: 5.70



Coffee
LRV: 6.05



Midnight
LRV: 6.56



Evergreen
LRV: 6.69



Ocean
LRV: 8.00



Poppy
LRV: 10.39



Lead
LRV: 12.77



Steel
LRV: 26.99



Cloud
LRV: 28.57



Linen
LRV: 38.59



Glacier
LRV: 42.09



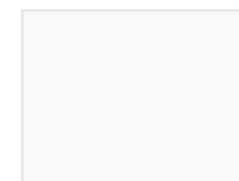
Canvas
LRV: 53.27



Buttercup
LRV: 55.54



Photoluminescent
LRV: 57.59



Snowdrift
LRV: 83.77

*See individual profile pages for colour availability. Xtra-grip, Xtra-grip Plus & Interior Grained insert options also available.

For more information or to see the full range visit www.gradus.com



DIY SOS - Blackburn



The Roots Foundation, Wales



Havannah House, Glasgow



Park Hill Flats, Sheffield

Discover how Gerflor is revolutionising the social housing market with our innovative flooring solutions! Our case studies illustrate how our durable and stylish floors are transforming communal areas and living spaces alike. Explore how our flooring solutions bring comfort, sustainability, and aesthetics together to create inviting environments that residents are proud to call home.

Quality

A broad range of looselay, Gerflor Fibre Technology (GFT) backed floorings in multiple widths, allowing faster fitting and high quality products with lower waste, inconvenience and cost.

Lifetime cost savings

Gerflor's looselay GFT backed products avoid many subfloor problems as they can be quickly overlaid, even where there are high moisture levels. Benefits include the speeding up of installation time, lowering of costs and potential call-backs.

Partnership

Gerflor has dedicated and experienced sales and technical teams, to provide comprehensive support to its customers. Training on how to install Gerflor floorings is also available.

Tenant satisfaction

Whilst maintaining the technical performance and comfort aspects, Gerflor ranges are manufactured with environment in mind, as well as the health and well being of others.



"Gerflor is an ideal product for high traffic areas as I know it will really take the knocks and keep its vibrant appearance. For a designer like me, I love the wide selection of colours and finishes so the practical aspects don't have to compromise the overall design."

- Sophie Robinson, Interior Designer DIY SOS

A Lancashire charity that helps to support homeless young people is able to accommodate more of its service users after a rundown church room was completely renovated, thanks to the BBC's DIY SOS show and all suppliers who provided donations to this worthy cause.

Gerflor donated approximately 270m² of Creation 55 Dry Back LVT flooring for the main areas, including living space and bedrooms, and a further 16m² of Tarasafe Ultra H₂O vinyl safety flooring for the bathrooms.

Solution: Creation 55 LVT and Tarasafe Ultra H₂O



0579 Amarante



0373 Silver City



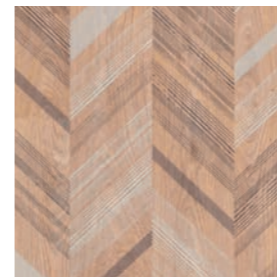


"I love to use strong colour in my schemes as it's such an instant game-changer and can effectively offer up the feel-good factor."

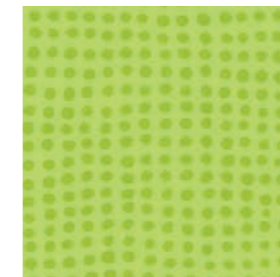
- Sophie Robinson, Interior Designer DIY SOS

In a special Children in Need episode the DIY SOS went to Swansea to help a local charity rebuild their support centre. The project needed high quality flooring as part of the re-build, so they turned to international flooring specialist Gerflor to come to the rescue with advice and the donation of some stunning products that would make this ambitious transformation possible. The various rooms in the centre benefited from Gerflor's outstanding Taralay Impression Comfort and Taralay Initial Comfort flooring.

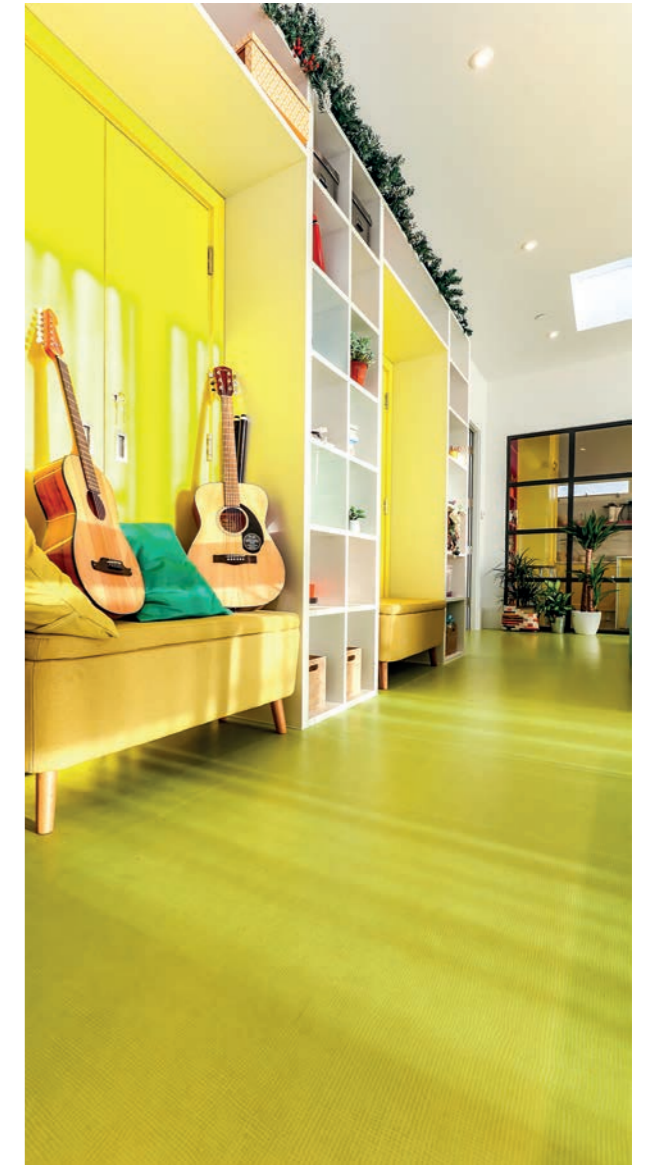
Solutions: Taralay Impression Comfort and Taralay Initial Comfort



0724 Herringbone Chatain



0515 Diversion Kiwi





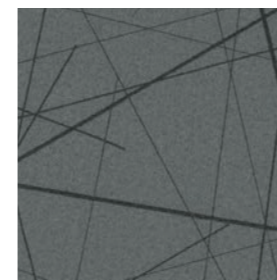
"The linear pattern of Gerflor's Taralay Impression Black design is very simple but provides a 'sexy' look, whilst also being quite subtle and giving an architectural feature to the interior."

- Magdalena Krzyzanowska, Architect, Vastint Hospitality

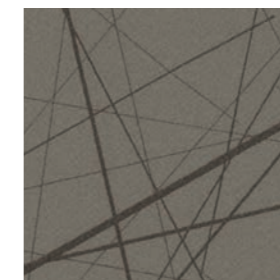
The six-storey, purpose-built building accommodates 458 students in a variety of stylish accommodation options from different sized individual and shared studio apartments with kitchen facilities to en-suite rooms, all complete with indoor and outdoor social spaces and supporting management services.

The aim was to create student homes with quality fixtures, comfortable modern interiors and unique touches in up-beat, lifestyle surroundings to offer an alternative to traditional halls of residence or private flat or house rentals.

Solution: Taralay Impression Comfort



0746 Black



0765 Taupe





"The client is absolutely delighted with the final outcome of the Gerflor flooring, and we understand the flooring is performing exceedingly well and meeting the client's expectations."

- Alex Mason, Area Sales Manager - Gerflor

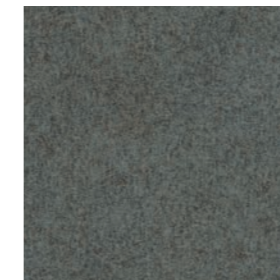
In completing the £21M Park Hill Flats restoration project on a Sheffield housing development Kier Construction and architects Whittam Cox specified 4000m² of high-quality vinyl flooring from international flooring specialist Gerflor.

The project would provide a showcase for two of Gerflor's signature flooring products - the Taralay Impression Compact heterogeneous collection and their slip-resistant Tarasafe Standard safety range.

Solutions: Taralay and Tarasafe Sheet Flooring.



0543 Cemento Brescia



0525 Modena



Services

As a combined business of leading manufacturers and as specialists in the housing sector, we have a number of added value services to support you with all your housing projects. Contact us for further information on any of the services detailed below.

Test our products – Free Trial Areas

We are so confident in our housing collections, we offer free trial areas up to 20 sqm for new clients, with projects greater than 500 sqm. Projects currently specified in any Gerflor domestic or commercial vinyl are excluded from this offer.

For further terms and conditions please contact us today.



Be in the know – Lunch and Learn's

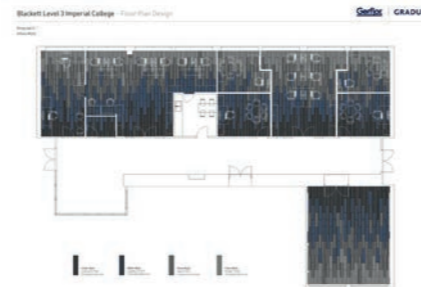
If you are looking to find out more about how to overcome housing challenges, whether it is for refurbishments or new build, we have a range of informal seminars that can help.

Learn more about the latest housing innovations to ensure projects run on time and to budget in a sustainable and efficient way.

"The Big Idea" – Create a Visual Design

Do you need a bespoke service where you would like to see products and colours to suit an exact design requirement for a housing roll out scheme?

This in house design service is available to meet this precise need so that you can visualise your design in situ.



Inspiration to realisation – Sampling Mood Boards

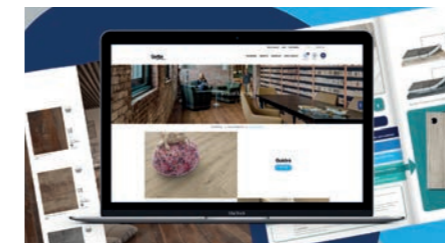
If you are looking for tenants boards, material for mood boards or loose sampling or swatches for your projects, contact us for your housing needs.

We can supply standard and customised sampling for your bespoke requirements.

Get creative – Interior Designer

Ideal for architects, designers and specifiers, our flooring visualiser provides realistic imagery of our portfolio of original luxury vinyl designs. Explore wood and stone flooring and experiment with laying patterns.

You can also upload your own photographs to generate a real-life simulation of your floor.

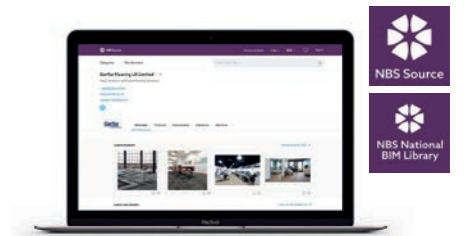


Be informed – Virtual Library

With direct access to our free virtual library, you can discover our full range of commercial and technical literature whether you are in the office, at home or conducting an on-site installation.

Enhance your specifications – NBS

Gerflor and Gradus are live on NBS Source. NBS Source provides the construction product information you need, when you need it. Including new enhanced product data, along with everything from Product Selector, NBS BIM Library and NBS Plus, which integrates directly into your project work flow.



Develop your knowledge – CPDs

The Gerflor and Gradus CPDs fall under the design, construction and technology RIBA core curriculum.

They focus on keeping architects and specifiers up to date with the latest design, technical and engineering practices. They also explore some of the issues and trends that those in the industry now come to face.

Discover our projects – Case Studies

We have a wide range of credible references, with customer testimonials that demonstrate our product innovations in action. Find out more about how our clients have future-proofed their projects in education, healthcare, offices, sports and leisure, hospitality, industry, housing and many more.



Proud Suppliers to...

Contact the Housing Team

Gerflor has a dedicated team for the housing sector with over 80 years' experience in social housing and new build projects. Feel free to contact us and speak to us about your specific service support needs and any other enquiries.



Alex Mason

Housing Specification
Key Account Manager
Midlands, North,
Scotland & Ireland
Mobile: 07809 086 901
Email: alexander.mason@gerflor.com



Conrad John

Housing Specification
Key Account Manager
Wales, South West,
South East & London
Mobile: 07860 821 486
Email: conrad.john@gerflor.com



A series of horizontal lines for writing on page 66.

A series of horizontal lines for writing on page 67.



Scan the QR code to download
our full social housing brochure or
access online here:
<https://bit.ly/4ccsmR6>

Gerflor[®]

GRADUS

Head Office:

Park Green,
Macclesfield,
Cheshire, SK11 7LZ

Gerflor enquiries

Tel: 01625 428922
E-mail: contractuk@gerflor.com
Website: gerflor.co.uk

Gradus enquiries

Tel: 01625 428922
E-mail: imail@gradus.com
Website: gradus.com