

Education

Specification Guide to Floors, Walls & Accessories

gerflor.co.uk
gerflor.ie
gradus.com



Gerflor[®]

GRADUS



GRADUS
A Gerflor company

FUNDAMENTALS

A FUSION OF PRODUCTS & VALUES

Gerflor and Gradus offer products which are ideal for use in a wide variety of applications across any education facility. Products can be combined to provide a complete package that balances performance, aesthetics and cost alongside environmentally responsible manufacturing processes.

A FRESH APPROACH

We believe passionately in providing the customer with the very best in terms of service. Through our combined team we can offer expert advice to help with product selection backed up with extensive UK stocks to ensure our products are delivered on-time, every-time.



[View the video...](#)



A NEW LEVEL OF
INNOVATION,
QUALITY, SERVICE
& TEAMWORK



SUREPROTECT
WALL GUARDS
CORNER GUARDS
HANDRAILS
DOOR PROTECTION



MIPOLAM
TARASAFE
TARAFLEX
DLW
TARALAY
CREATION LVT
CARPETS





Gerflor & Gradus - The Education Specialists

With over 100 years of combined experience in the education sector, together we have built an unrivalled reputation for quality and service.

The Gerflor group is well known as a credible and valued supplier of complete flooring solutions

designed specifically for the education market. The constraints of durability for high traffic areas, slip resistance and acoustic qualities are part of mandatory characteristics for this sector.

Our expertise allows us to offer numerous flooring products suitable for all areas of an education facility. Whilst maintaining the technical performance and the design

aspect of our floorcoverings, we manufacture our ranges with the environment in mind as well as the health and well-being of end-users. We have recognised brands ideal for education facilities including our Mipolam, DLW, Taralay, Taraflex®, Tarasafe, Creation and Gradus carpet ranges.

Gradus is a UK manufacturer of contract interior solutions,

these include stair edgings, floor trims, barrier matting, wall protection and lighting. As the leading UK manufacturer of these solutions, we support our customer's projects to provide safe, accessible, attractive and inclusive environments for all users.

Gradus controls the design of products from initial concept through to final manufacture,

including specialist CAD design and the manufacture of tooling. This ensures that quality is maintained and provides customers with an efficient, flexible, and fast service.

We also offer site survey, project management and installation services for our wall protection, entrance matting and lighting products.

Our tried and trusted Education Solutions

Complete Solution

Gerflor & Gradus are able to offer a complete floor and walls covering solution that can contribute to a safe and inspiring building environment.



Gerflor and Gradus Services

Technical & Specification Support Specialists

Our dedicated specialists can assist you with all your specification needs. Whether it's a new build or refurbishment project we have the expertise and innovations to meet all budgets. Hand in hand with our partners, we work together to propose the optimum solution for the client's needs, utilising the most appropriate safe, hygienic and sustainable solutions for the specific applications. We don't stop at just providing specification advice, we can also provide a free site survey, we will visit, assess and audit the facility and make improvement suggestions to future proof the building interiors.



The Technical Support team is available to offer advice on the specification and installation of products, including guidance on the latest building standards and legislation. Be rest assured that Gerflor and Gradus has a world-class pedigree of products that are tried and trusted and deliver every time. All backed up by a network of technical, specification and customer support teams.

Sampling Support Services For Every Need

We offer a free sample service for all our clients. Whether it's a range overview binder, loose sample (standard or bespoke), supporting literature or if it is something bespoke you need like a mood board or test material, contact us and we will aim to supply the sample for your required need. To request a sample, literature or anything else, email contractuk@gerflor.com or imail@gradus.com or call 01625 428922

Specification Documents and BIM Objects

As an NBS partner you have access to a single source for product information and incorporates the Gerflor and Gradus products. NBS Source provides an additional level of enhanced product data, in a consistent, structured format that will integrate seamlessly into your project workflow.



[Click here](#) to view Gerflor's products on NBS Source



[Click here](#) to view Gradus' products on NBS Source

Local Stock for Education Best Sellers

We have stock in place locally in the UK for our best selling education ranges. A new warehousing and distribution facility based in Winsford offers a broad range of in-depth stock to provide an enhanced service level to our customers. Essential when time is of the essence and our customers need innovative products and fast delivery for those essential quick turn around projects. Speak to our education specialists for stock availability or any further information needs.

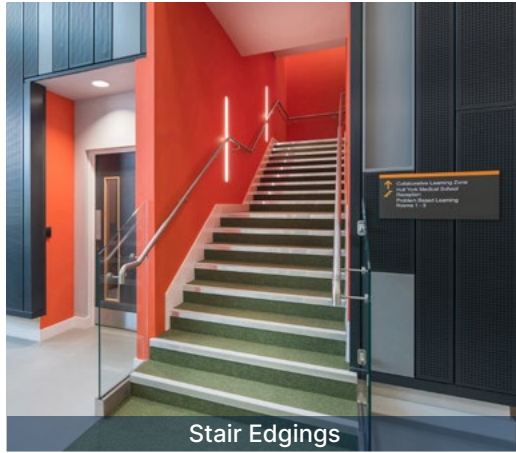


Gerflor and Gradus Services

CPD's and Training

As members of RIBA CPD Providers Network we offer a full range of RIBA assessed and approved CPD seminars covering: Vinyl Flooring, Sports Flooring, Matting, Wall Protection, Stair Edgings and Industry specific CPDs such as Healthcare and Industry.

To book a CPD Seminar, contact our Technical Support department on 01625 428922 or Email: contractuk@gerflor.com or imail@gradus.com



Stair Edgings



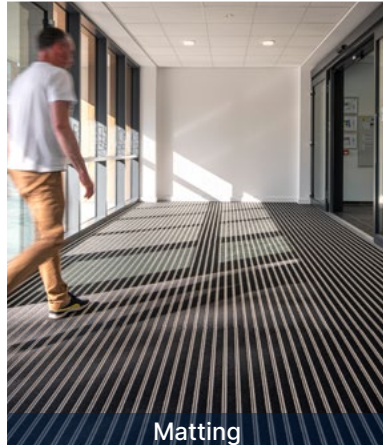
Healthcare



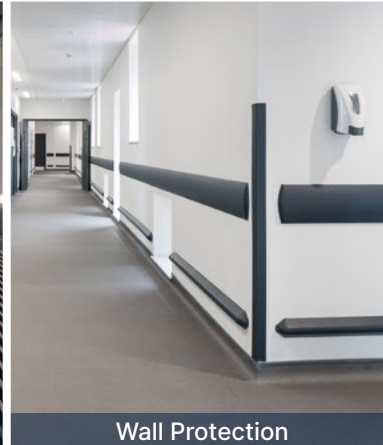
Vinyl Flooring



Industrial Flooring



Matting



Wall Protection



Sport Flooring

Accreditations and Certifications

Gerflor



Gradus



Comprehensive Education Solutions

The Gerflor & Gradus ranges are both hygienic and safe, our solutions are suitable for all areas of the education facility.



Click on the relevant icon for the ideal product solutions

Entrance & Reception Areas

Key considerations when selecting Flooring and Wall Protection products for Entrance & Reception Areas

- ✓ A bright, calm and welcoming environment
- ✓ Resistance to heavy traffic
- ✓ Good slip resistance on floors
- ✓ Practical in design to facilitate building access
- ✓ Protecting walls and corners that are vulnerable to damage
- ✓ Zoning and navigation assistance

Resilient Flooring

Taralay Libertex LooseLAY

Innovative MAX3 3-layer system: combines durability, acoustics, ease of use and installation.



1430 Legend Grey



2247 Hossegor Latte



1785 Reflect Earth



2242 Legend Country

To see the full range - [click here](#)

Creation 70 Dryback LVT

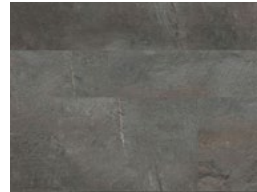
A decorative flooring available in tile or plank. 0.7mm wear layer, ideal for high traffic areas.



0577 Albion



0535 Douglas



1069 Etna Dark



1068 Etna Beige

To see the full range - [click here](#)

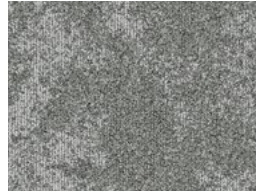
Carpets

Lunar

Inspired by the lunar landscape the design is available in a choice of eight colourways to help create a stylish and modern environment.



07401 Janssen



07406 Picard



07404 Stadius



07408 Moro

To see the full range - [click here](#)

Other Products

XT™ Aluminium Stair Edgings

The Gradus XT range of stair edgings offers the ultimate solution in reducing slips, trips and falls on stairs.



To see the full range - [click here](#)

Entrance Matting

An effective barrier matting system, when correctly specified, will help to minimise the risk of slip accidents caused by wet flooring.



To see the full range - [click here](#)

Wall Protection

Selecting the right product

Reception areas are often subject to scuffs and scrapes from tables, chairs and other moveable objects. Corner & edges are also vulnerable to damage from deliveries and other wheeled traffic entering the building.



- 1 SureProtect Artworx - [click here](#)
- 2 SureProtect Design® (wood effect) - [click here](#)
- 3 Standard Corner Guard - [click here](#)

Corridors & Hallways

Key considerations when selecting Flooring and Wall Protection for Corridors & Hallways

- ✔ Selected products need to deal with heavy traffic both pedestrian and wheeled
- ✔ Products should offer zoning and navigation assistance
- ✔ Flooring must be slip resistant and be able to cope with heavy rolling loads
- ✔ Robust Wall Protection system to protect vulnerable walls and corners
- ✔ Handrails for guidance and support

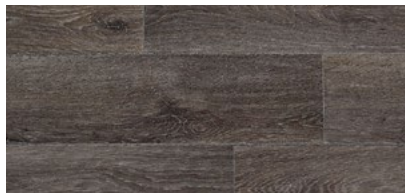
Resilient Flooring

Tarasafe Impression

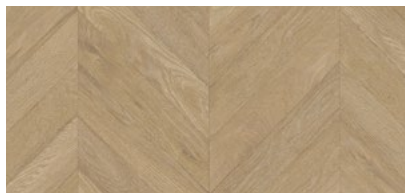
Safety flooring that's HSE 36+ and R11 slip-resistant, available in wood effect and mineral designs.



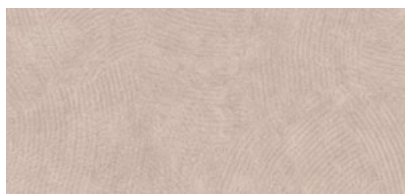
1029 Rough Grey



0520 Noma Black



1110 Rivau Nature

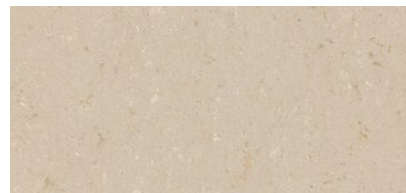


0038 Pierre

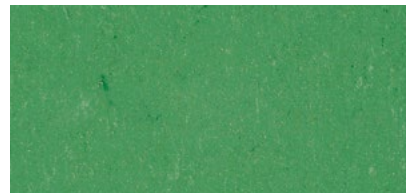
To see the full range - [click here](#)

DLW Colorette

Vivid colours to awaken any interior. Micro-scratch and stain resistance. Made from 98% natural materials.



0012 Light Beige



0006 Vivid Green



0080 Elephant Grey



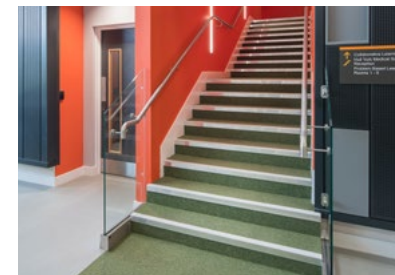
0123 Poppy Blue

To see the full range - [click here](#)

Other Products

XT™ Aluminium Stair Edgings

The Gradus XT range of stair edgings offers the ultimate solution in reducing slips, trips and falls on stairs.



To see the full range - [click here](#)

Wall Protection

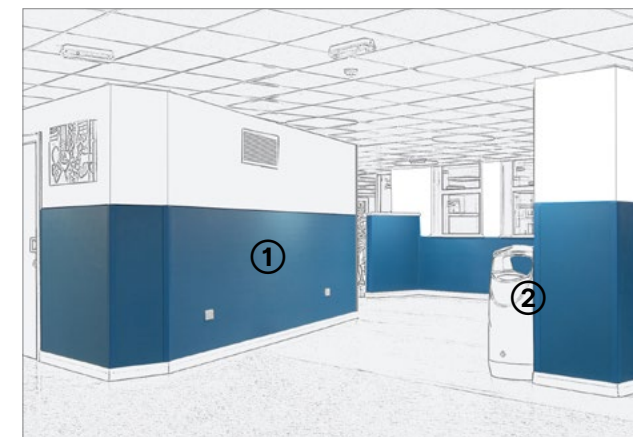
Corridors and circulation areas are amongst the busiest parts of the building. Scuffs and scrapes from students with school bags leaning against walls are common causes of damage in school corridors.



To see the full range - [click here](#)

Wall Protection

Selecting the right product



- 1 SureProtect Endure® Wall Cladding - [click here](#)
- 2 Standard Corner Guards - [click here](#)

Key considerations when selecting Flooring and Wall Protection products for Sports Halls. Dedicated sport literature is also available

- ✔ Help reduce injuries from falls and impacts
- ✔ Good underfoot performance to eliminate sprains and strains
- ✔ Excellent resistance to rolling loads
- ✔ Suitable for both sport and non-sport usage
- ✔ Surface treatment that reduces long term maintenance costs
- ✔ Protection for both child and adult users of the hall
- ✔ Meets DfE guidelines

Resilient Flooring

Taraflex® Multi-Use

P1 sports flooring that's suitable for all types of sports and leisure activities.



6390 Maple Lava



6430 Blue



2791 Light Grey



5742 Wood Oak

To see the full range - [click here](#)

Taraflex® Evolution*

P1 sports flooring that's ideal for a variety of sports and leisure activities.



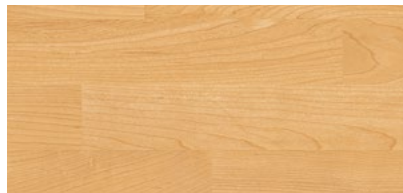
2404 London Light Blue



6557 Forest



6350 Light Cherry Design



5763 Maple Sun

*Also available in Sustainable Looselay

To see the full range - [click here](#)

Other Products

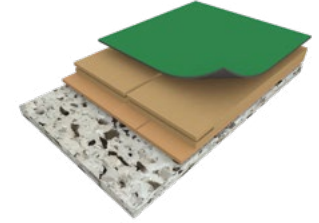
Taraflex® Systems

Giving the benefit of impact protection and high levels of shock absorption. Available with a number of Taraflex finishes or DLW Linoleum to give either combined elastic or area elastic finish.



To see the full range - [click here](#)

Taraflex® Subflex AE



Taraflex® Subflex Combisport



Secondary Barrier Matting

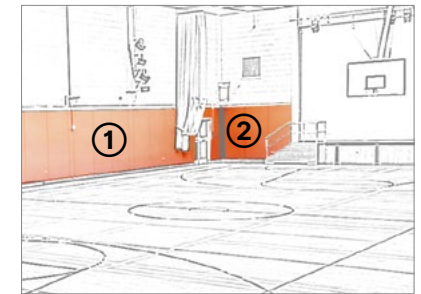
Boulevard secondary barrier mats are made from high-performance textiles to provide an effective surface for the removal and retention of dirt and moisture from pedestrian and wheeled traffic, reducing ingress to adjacent floorcoverings.



To see the full range - [click here](#)

Wall Protection

Sports halls often need to deal with a high level of activity which often requires a robust wall protection system to protect walls and corners from scuffs and scrapes and direct impact.



- 1 SureProtect Endure® - [click here](#)
- 2 Standard Corner Guards - [click here](#)

Classrooms

Key considerations when selecting Flooring and Wall Protection for Classrooms

- ✔ Provide a stimulating environment for pupils to learn
- ✔ Available in an extensive colour palette, numerous designs and offer high performance for everyday use
- ✔ Easy clean and low-cost maintenance
- ✔ Robust wall protection solution to protect the building from damage and improve safety for students
- ✔ Bespoke wall protection designs can help to create an inspirational learning environment

Resilient Flooring

DLW Marmorette

Suitable for heavy-duty traffic and hard-working spaces. Manufactured from 98% natural materials and up to 40% recycled content.



0050 Quartz Grey



0253 Pebble Grey



0083 Jungle



0148 Ink Blue

To see the full range - [click here](#)

Tarasafe Impression

A tough, hygienic and durable safety flooring that offers HSE 36+ and R11 slip-resistance as well as stunning wood and mineral designs.



0723 Charme Pecan



1070 Habana 3D Vinales



1028 Rough Beige



1029 Rough Grey

To see the full range - [click here](#)

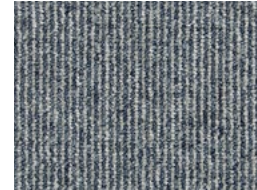
Carpets

Lafite Connect

The range includes 4 patterns that can be used together to enhance an interior design.



Lafite Plains LC1



Lafite Stripes LCS15



Lafite Space LCSPACE33



Lafite Fusion LCFUSION35

To see the full range - [click here](#)

Stratus

Suitable for a wide variety of educational environments. Manufactured using Econyl Regenerated yarn and contains 78% total recycled content.



06506 Jet Stream



06503 Rainfall



06501 Valley Breeze



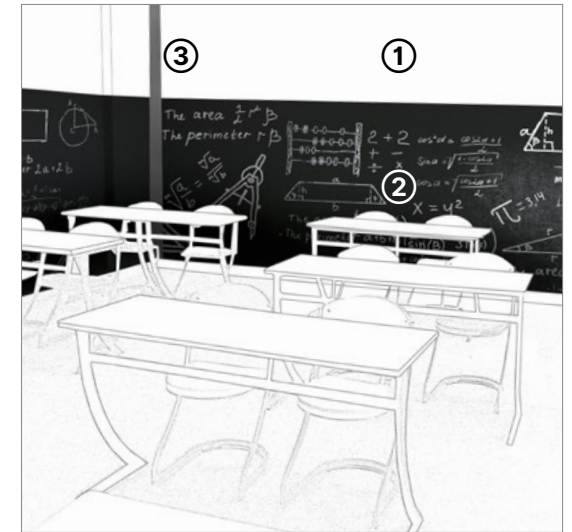
06513 Solar Blue

To see the full range - [click here](#)

Wall Protection

Selecting the right product

Classrooms need to be practical in design and offer a level of protection from everyday scuffs and scrapes. Wall protection can be used to improve morale by creating stimulating and vibrant spaces using contemporary design themes.



- 1 SureProtect Endure® Wall Cladding - [click here](#)
- 2 SureProtect Artworx® Wall Cladding - [click here](#)
- 3 Standard Corner Guard - [click here](#)

Key considerations when selecting Flooring and Wall Protection for Libraries

- ✓ A bright, calm and welcoming environment
- ✓ Resistance to heavy traffic
- ✓ Adequate sound reduction
- ✓ Practical in design to facilitate building access
- ✓ Protecting walls and corners that are vulnerable to damage
- ✓ Zoning and navigation assistance

Resilient Flooring

Taralay Impression Acoustic

A mix of vibrant colours and wood effect designs that provide 19db acoustic insulation for low impact sound.



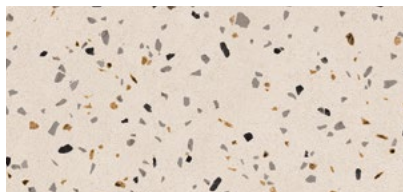
1039 Jungle Green



0770 Gentlemen Clear



0760 Moon Island



1059 Terrazzo Brescia

To see the full range - [click here](#)

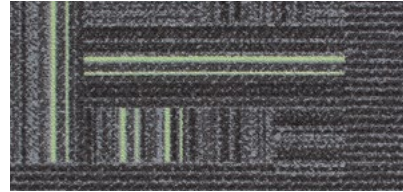
Carpets

Times square

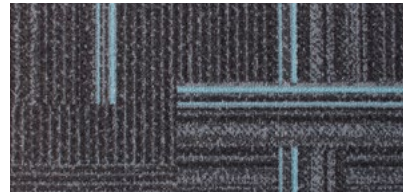
Unique design in 10 contemporary colours. Offering 32dB impact noise rating.



06601 Grey



06606 Lime



06608 Light Blue



06611 Dark Blue

To see the full range - [click here](#)

Wall Protection

Selecting the right product

Libraries and other working environments are typically required to be practical in design and need to offer a level of protection from everyday scuffs and scrapes. Wall protection products can be utilised to create stimulating and vibrant spaces using contemporary design themes.



- 1 SureProtect Endure® - [click here](#)
- 2 SureProtect Design® (Wood effect) - [click here](#)
- 3 Standard Corner Guard - [click here](#)

Dining & Assembly Halls

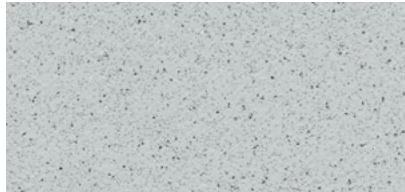
Key considerations when selecting Flooring and Wall Protection for Dining and Assembly Halls

- ✓ Appealing and attractive
- ✓ Good slip resistance
- ✓ Scratch, dent and fade resistance
- ✓ Minimal maintenance for years
- ✓ Walls need to be hygienic and easy to clean
- ✓ Walls and corners need to be protected from scuffs and scrapes

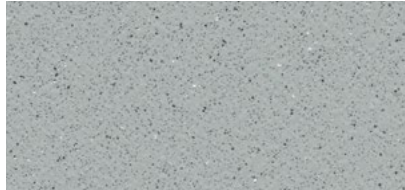
Resilient Flooring

Tarasafe Standard

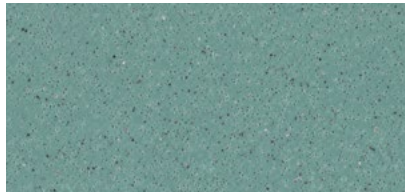
Outstanding safety flooring where slip-resistance, durability and hygienic conditions are required, meets HSE +36 guidelines.



7731 Marbre



7767 Dove Grey



6589 Leaf



7618 Edelweiss

To see the full range - [click here](#)

Tarasafe Impression

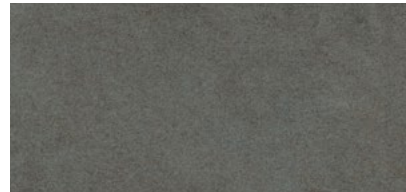
A tough, hygienic and durable safety flooring that offers HSE +36 and R11 slip-resistance, available in wood effect and mineral designs.



0723 Charme Pecan



1069 Habana 3D Trinidad



0525 Modena



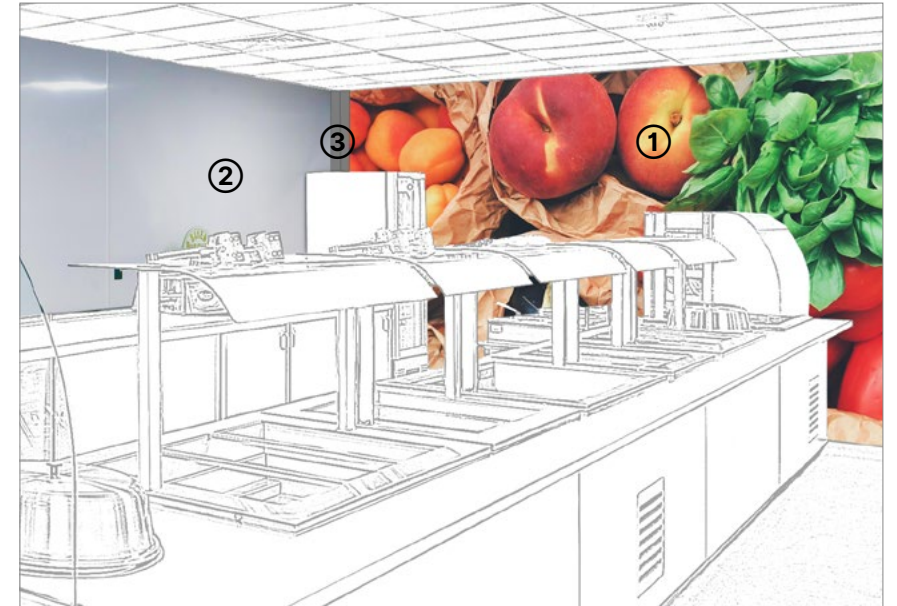
0523 Genova

To see the full range - [click here](#)

Wall Protection

Selecting the right product

Dining and assembly areas are often subject to scuffs and scrapes from tables, chairs and other moveable objects. Corners and edges are also vulnerable to scuffs and scrapes from school bags.



- 1 SureProtect Artworx® (print option) - [click here](#)
- 2 SureProtect Pure® Wall Cladding - [click here](#)
- 3 Stainless Steel Corner Guard - [click here](#)

Key considerations when selecting Flooring and Wall Protection for Kitchens

- ✓ Good slip resistance even when wet
- ✓ Resistance to heavy traffic and rolling loads
- ✓ Easy clean walls and low-cost maintenance
- ✓ Smooth and impervious walls to maintain food hygiene standards

Resilient Flooring

Tarasafe Plus

A safety flooring with R10 slip resistance & meets HSE +36 guidelines. Available with a 12 year warranty.



7386 Savana



7767 Dove Grey



7731 Marbre

To see the full range - [click here](#)

Tarasafe Super

A safety flooring with R12 slip resistance & meets HSE +36 guidelines. Available with a 12 year warranty for peace of mind.



7386 Savana



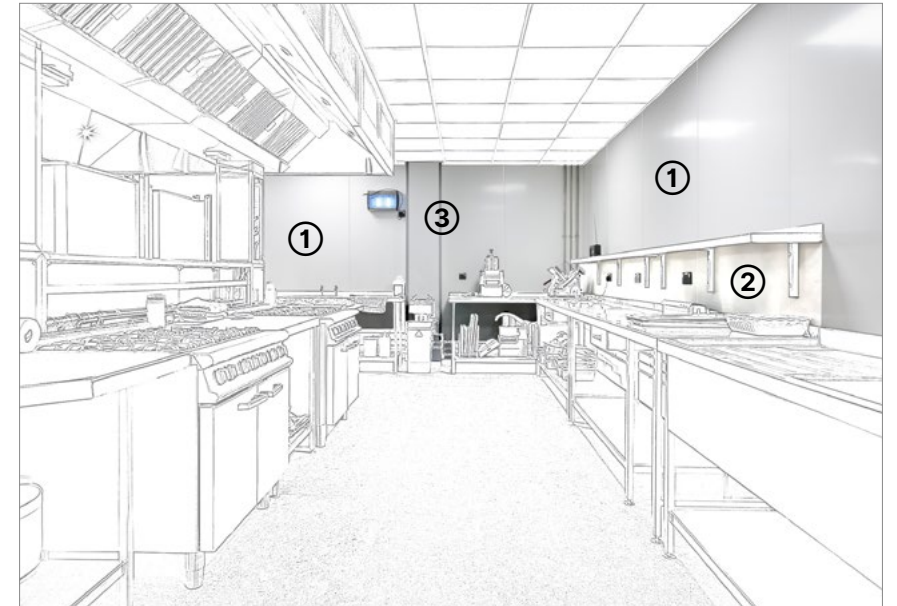
7767 Dove Grey

To see the full range - [click here](#)

Wall Protection

Selecting the right product

Moveable equipment like catering trolleys, tables and chairs can cause scuffs and scrapes to walls. Consider easy to clean surfaces and corner guards to protect walls and corners.



- 1 SureProtect Pure® Wall Cladding - [click here](#)
- 2 Stainless Steel Cladding - [click here](#)
- 3 Stainless Steel Corner Guard - [click here](#)

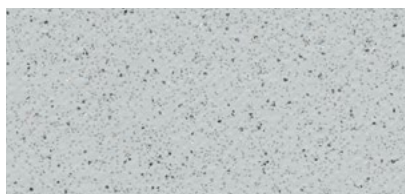
Key considerations when selecting Flooring and Wall Protection products for Toilets

- ✓ Good slip resistance even when wet
- ✓ Copes well with heavy traffic
- ✓ Provides good levels of hygiene
- ✓ Walls need to be smooth and easy to clean
- ✓ Walls need to have an impermeable barrier to moisture and bacteria

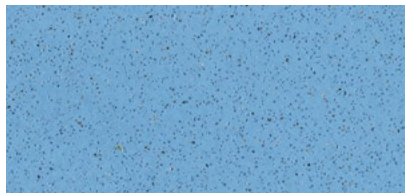
Resilient Flooring

Tarasafe Standard

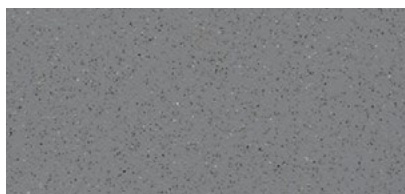
Outstanding safety flooring where slip-resistance, durability and hygienic conditions are required, meets HSE +36 guidelines.



7731 Marbre



2430 Rain Drop



7773 Storm

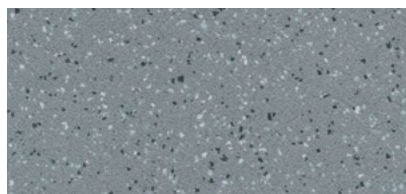


8102 Paprika

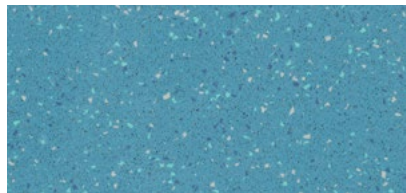
To see the full range - [click here](#)

Tarasafe Ultra

Outstanding safety flooring where slip-resistance, durability and hygienic conditions are required, meets HSE +36 guidelines.



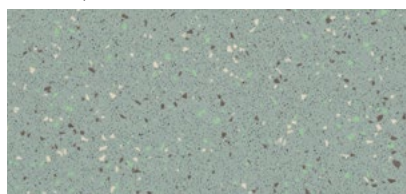
8709 Granite



2432 Larimar



7383 Diopside



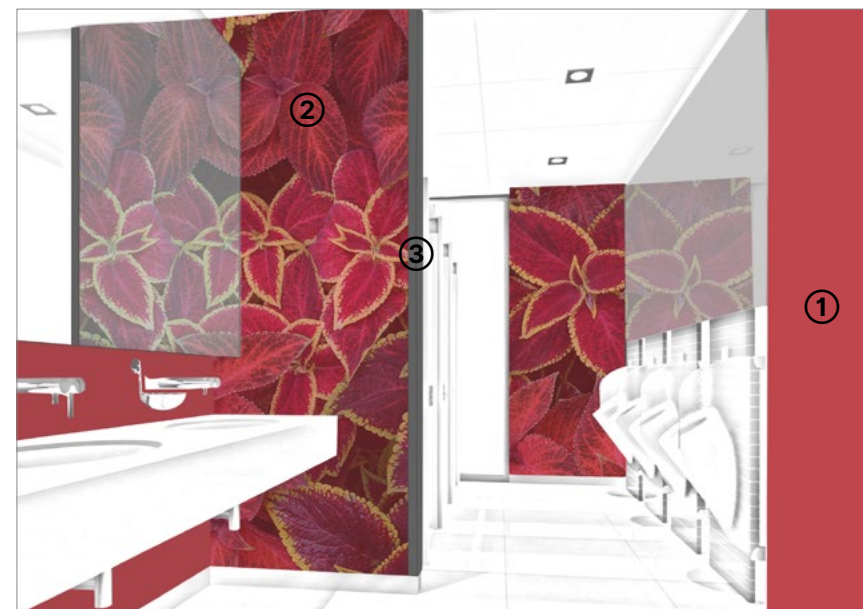
6591 Serpentine

To see the full range - [click here](#)

Wall Protection

Selecting the right product

Bathrooms and shower rooms are areas where cleanliness is a priority. SureProtect Pure wall protection is smooth and easy to clean and offers an impermeable barrier to moisture and is a hygienic alternative to ceramic tiles, removing the need for grout which can harbour bacteria.



- 1 SureProtect Pure® Wall Cladding - [click here](#)
- 2 SureProtect Artworx® Wall Cladding - [click here](#)
- 3 Standard Corner Guard - [click here](#)

Mainframe Rooms

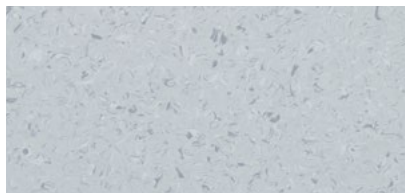
Key considerations when selecting Flooring and Wall Protection products for Mainframe Rooms

- ✔ Its important for these specialised environments that flooring is both electro-conductive and fast to install with minimal interruption to activity during the school hours
- ✔ Flooring needs to be sensitive to electrostatic discharges
- ✔ Walls and corners need to be protected from scuffs and scrapes

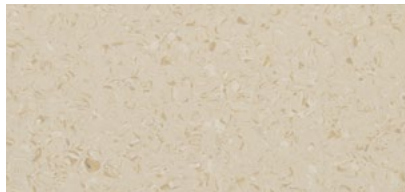
Resilient Flooring

Mipolam EL7

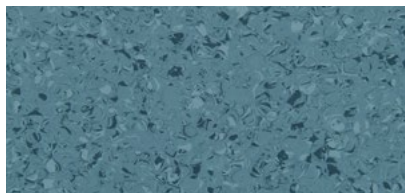
High-performance dissipative vinyl flooring treated with Evercare™ surface treatment for easy cleaning and maintenance.



4110 Violet Grey



4124 Smoked Opal



4166 Thistle

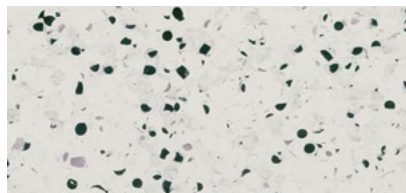


4132 Citrine

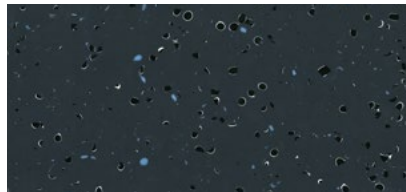
To see the full range - [click here](#)

GTI EL5

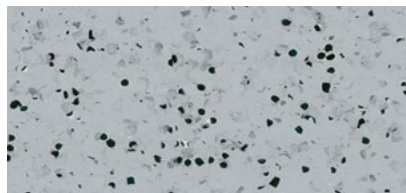
A unique solution offering all the benefits of a GTI Tile. Fast dove tail installation with electroconductivity and Evercare™ surface treatment.



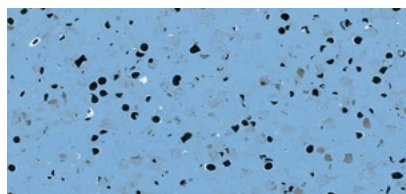
0350 Light Grey



0351 Black



0352 Grey



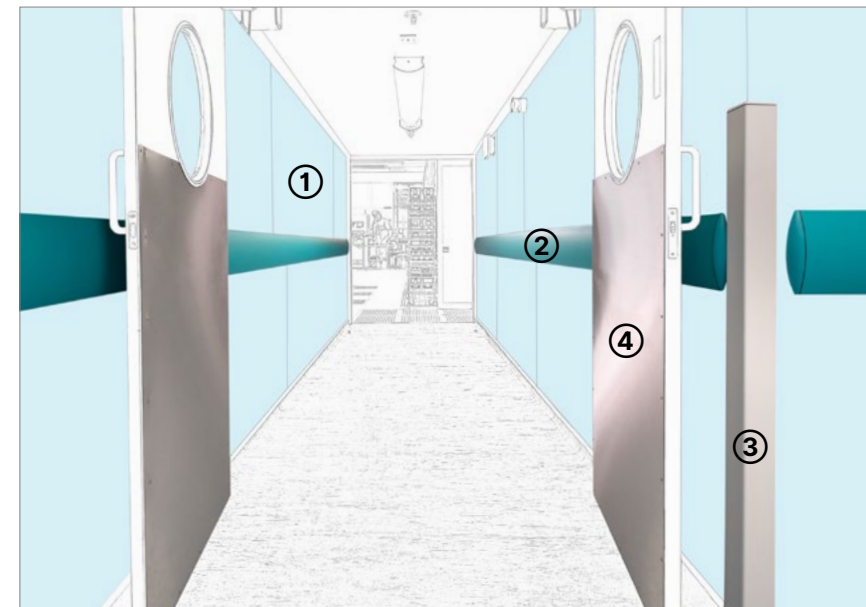
0354 Blue

To see the full range - [click here](#)

Wall Protection

Selecting the right product

Walls and corners are often subject to localised damage caused by movement of people and equipment. Damage is generally limited to scuffs and scrapes from objects within the room.



- 1 SureProtect Pure® Wall Cladding - [click here](#)
- 2 Wall Guard - [click here](#)
- 3 High Impact Corner Guard - [click here](#)
- 4 Stainless Steel Door Protection - [click here](#)

Head Teachers Office

Key considerations when selecting Flooring and Wall Protection for Head Teacher Offices

- ✓ Fast track solutions available for a luxurious look and feel
- ✓ Minimises dust allergies
- ✓ Resistance to stains
- ✓ Quiet and comfortable underfoot
- ✓ Easy clean and low maintenance
- ✓ Wall cladding can be used to create a stylish environment
- ✓ Walls and corners need to be protected from scuffs and scrapes

Resilient Flooring

Creation 55 LVT

Exclusive construction reinforced with fibreglass for comfort and stability. Exclusive wood and mineral designs.



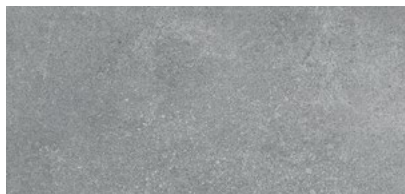
0584 White Lime



0796 Swiss Oak Golden



1268 Fabrik Mix Jute



0869 Bloom Uni Grey

To see the full range - [click here](#)

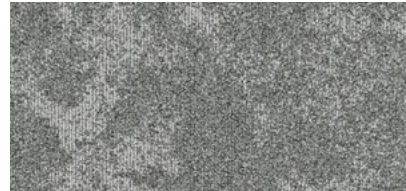
Carpets

Lunar

Inspired by the lunar landscape the design is available in a choice of eight colourways to help create a stylish and modern environment.



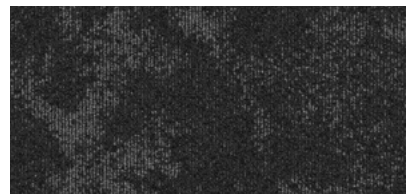
07401 Janssen



07406 Picard



07404 Stadius



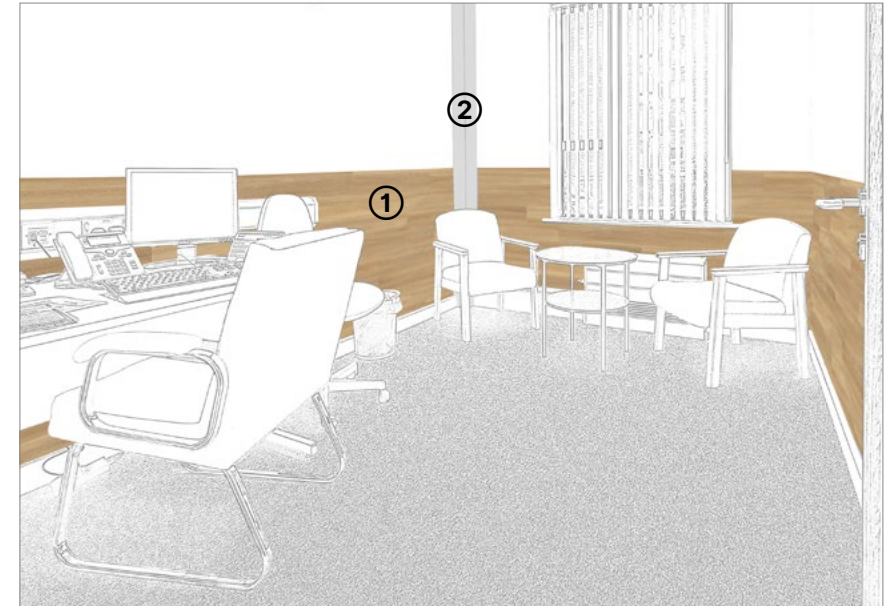
07408 Moro

To see the full range - [click here](#)

Wall Protection

Selecting the right product

Wall protection can be utilised to encourage engagement and improve morale by creating a stimulating and vibrant space by using contemporary design themes.



1 SureProtect Design® Wall Cladding (wood) - [click here](#)

2 Standard Corner Guard - [click here](#)

Computer Rooms

Key considerations when selecting Flooring and Wall Protection for Computer Rooms

- ✓ Anti-static dissipative
- ✓ Easy cleaning
- ✓ Walls and corners need protecting from scuffs and scrapes caused by tables and chairs and general movement of students

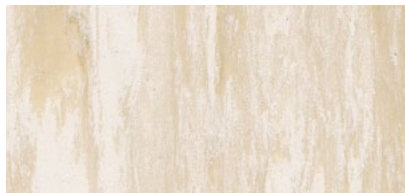
Resilient Flooring

Mipolam Robust EL7

Anti-static dissipative performance flooring is available in a palette of 6 semi-directional designs.



0013 Pewter



0003 Ivory



0112 Storm

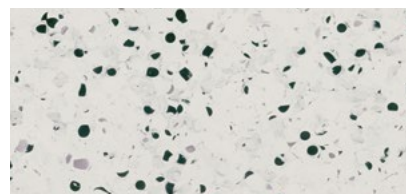


0306 Green

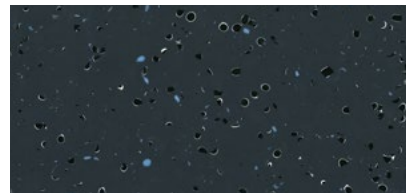
To see the full range - [click here](#)

Mipolam EL5

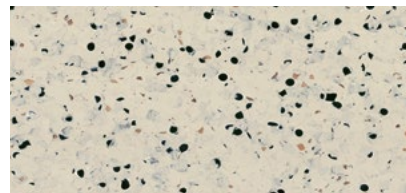
Permanent conductive flooring is available in a palette of 6 colours in a non-directional design.



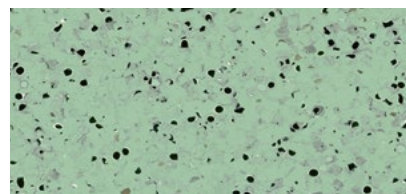
0350 Light Grey



0351 Black



0353 Beige



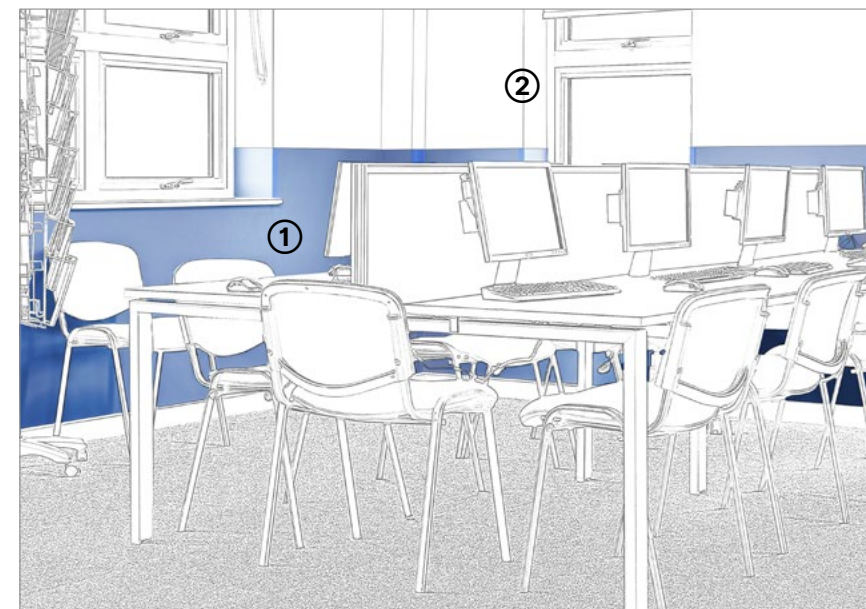
0355 Green

To see the full range - [click here](#)

Wall Protection

Selecting the right product

Computer rooms and other working environments corners are often subject to localised damage caused by equipment and chairs rubbing against the walls. Damage is generally limited to scuffs and scrapes from objects within the room.



1 SureProtect Endure® Wall Cladding - [click here](#)

2 Standard Corner Guard - [click here](#)

Outdoor Sports Areas

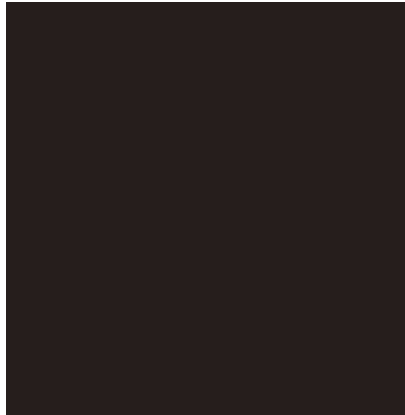
Key considerations when selecting Flooring and Wall Protection for Outdoor Sports Areas

- ✓ Improve player comfort in comparison to asphalt or concrete
- ✓ New courts can be built, in an existing space
- ✓ Retrofitted or portable courts for a tournament or an event
- ✓ Can be quickly and cost effectively installed
- ✓ Gerflor has a solution which does not require a yearly or costly refinish
- ✓ Handrails can be placed where pedestrian areas and walkways are adjacent to vehicle routes e.g. car parks

Resilient Flooring

Sport Court® PowerGame™ Plus

PowerGame™ Plus tiles are safe to play on and can also be easily installed in all facilities. Build a new court, renovate an existing space or set up portable courts for a tournament or event. Designed for a wide variety of sports, this solution is an ideal outdoor playing surface for virtually any activity.



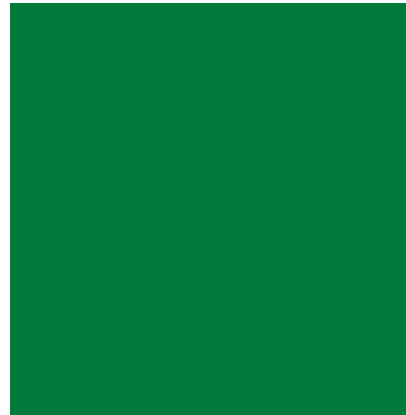
0003 Black



0005 Bright Blue



0006 Bright Red



0014 Green

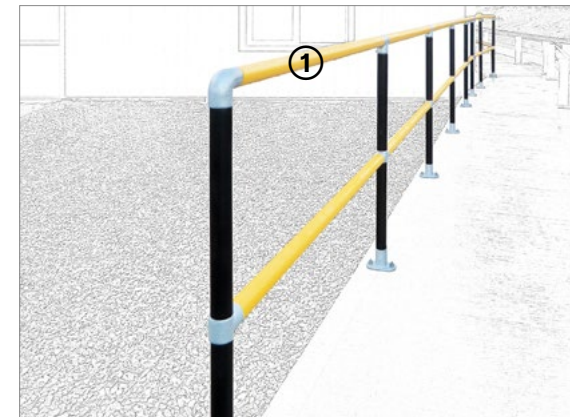
To see the full range - [click here](#)

Outdoor Playing Surfaces



Safety & Protection Systems

A modular handrail system consisting of galvanised steel rails and cast steel accessories. It is ideal for use in environments where pedestrian areas and walkways are adjacent to vehicle routes, for example, car parks, service areas and loading bays.



1 Handrail System - [click here](#)

Staff Rooms

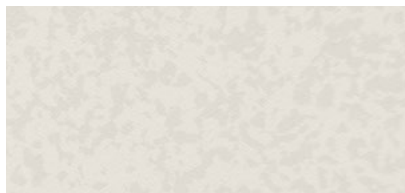
Key considerations when selecting Flooring and Wall Protection for Staff Rooms

- ✓ Stylish flooring can instantly transform a clinical looking staff room
- ✓ Easy to clean walls and floors
- ✓ Resistance to stains and cleaning chemicals
- ✓ Walls and corners need to be protected against minor scuffs and scrapes
- ✓ Bespoke artwork on the wall can create an inspirational working environment

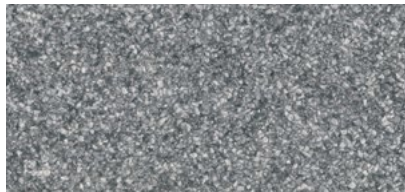
Resilient Flooring

Taralay Premium Comfort

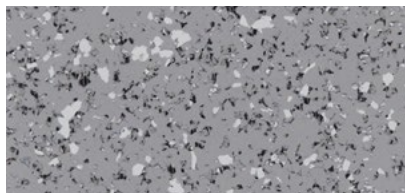
Acoustic and shock absorption properties with high acoustic performance and safe underfoot cushioning.



4364 Ivory New



9745 Cosmic



2740 Harlem Soft



8621 Ode

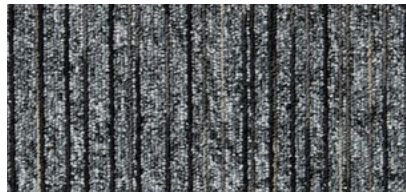
To see the full range - [click here](#)

Lafite Connect

Combine patterns within the Lafite Connect range to create unique designs ideal for large spaces or feature areas.



Lafite Plains LC6



Lafite Space LCSPACE28



Lafite Stripes LCS18



Lafite Plains LC5

To see the full range - [click here](#)

Wall Protection

Selecting the right product

Wall protection can be utilised to create a stimulating and vibrant space by using contemporary design themes.



- 1 SureProtect Artworx® Wall Cladding - [click here](#)
- 2 SureProtect Design® (wood) Wall Cladding - [click here](#)
- 3 Standard Corner Guard - [click here](#)



Wet Rooms & Shower Rooms

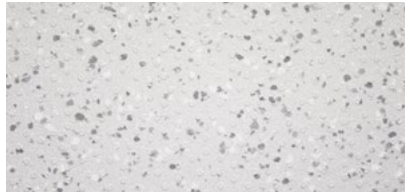
Key considerations when selecting Flooring and Wall Protection for Wet Rooms

- ✓ Good slip resistance
- ✓ Watertight floors and walls
- ✓ Resistance to stains and chemicals
- ✓ Easy clean and low-cost maintenance
- ✓ Walls need to be smooth and easy to clean creating an impermeable barrier to moisture and bacteria

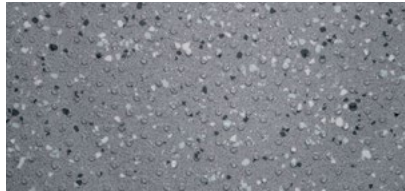
Resilient Flooring

Tarasafe Ultra H₂O

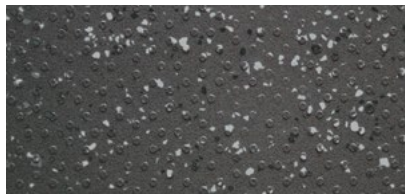
High-performance slip resistant safety flooring for wet and dry, barefoot and shod applications, meets HSE +36 guidelines.



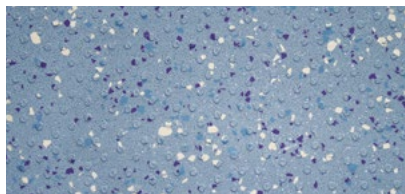
7720 Iceberg



7746 Stone



7732 Gravel



7413 Ocean Blue

To see the full range - [click here](#)

Tarasafe H₂O

High performance slip resistant safety flooring for wet applications that meets 50+ HSE guidelines.



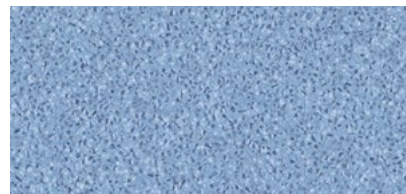
0033 Rhine



0031 Eacham



0035 Bacalar



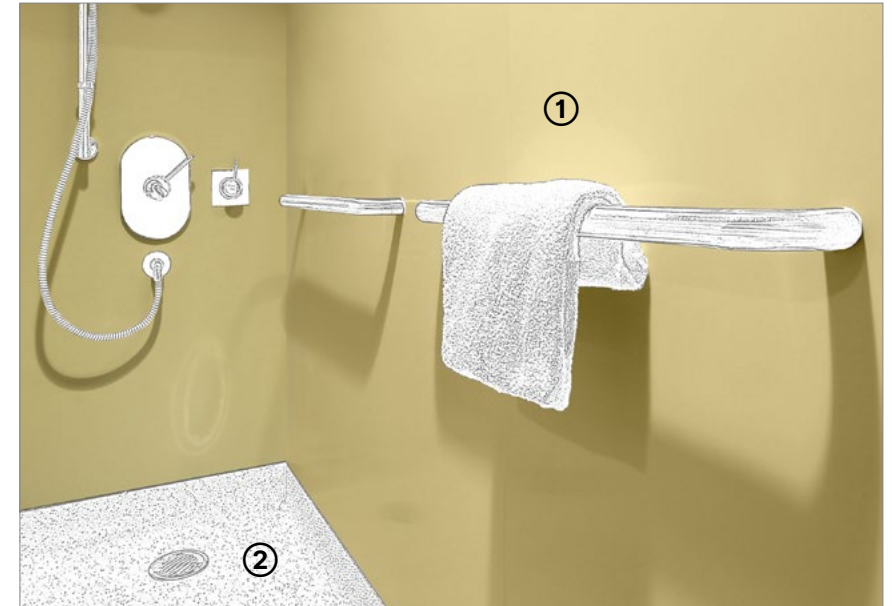
0036 Lagoa

To see the full range - [click here](#)

Wall Protection

Selecting the right product

The wall surfaces need to be easy to clean and need to create an impermeable barrier to moisture and bacteria.



1 SureProtect Pure® Wall Cladding - [click here](#)

2 Tarasafe Ultra H₂O - [click here](#)

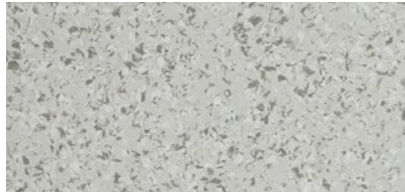
Key considerations when selecting
Flooring and Wall Protection for
Laboratories

- ✓ Hygiene and infection control
- ✓ Resistance to stains and chemicals
- ✓ Good slip resistance
- ✓ Quiet and comfortable underfoot
- ✓ Easy clean and low-cost maintenance

Resilient Flooring

Mipolam Affinity

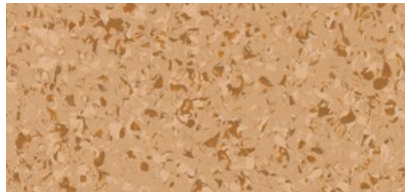
High-performance flooring with good abrasion resistance & Evercare™ surface treatment for easy cleaning.



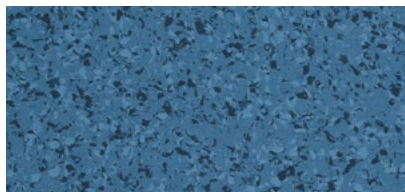
4412 Tundra



4402 Yuki



4425 Amber



4436 Santorini

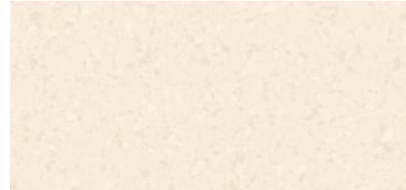
To see the full range - [click here](#)

Mipolam Symbioz™

High-performance homogeneous flooring treated with Evercare™ for outstanding chemical and stain resistance.



6044 Sea Storm



6001 Cotton



6027 Acacia



6032 Sunshine

To see the full range - [click here](#)

Wall Protection

Selecting the right product

Strict hygiene standards in laboratories require robust building materials that can withstand extensive cleaning. Mobile trolleys are frequently moved around increasing the potential damage to walls and corners.



- 1 SureProtect Pure® Wall Cladding - [click here](#)
- 2 Stainless Steel Corner Guard - [click here](#)
- 3 Stainless Steel Wall Guard - [click here](#)
- 4 Stainless Steel Door Face Protection - [click here](#)

Changing Rooms

Key considerations when selecting Flooring and Wall Protection for Changing Rooms

- ✓ 2 options available that all meet HSE +36 guidelines
- ✓ Good slip resistance even when wet
- ✓ Copes well with heavy traffic and provides good levels of hygiene
- ✓ Walls need to be hygienic and easy to clean
- ✓ Corners are vulnerable to damage so need protecting

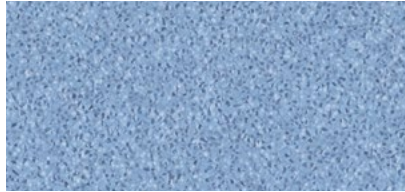
Resilient Flooring

Tarasafe H₂O

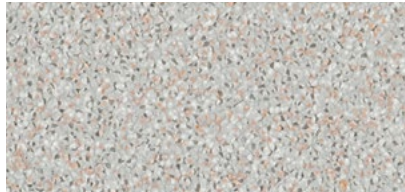
High performance slip resistant safety flooring for wet applications that meets 50+ HSE guidelines.



0033 Rhine



0036 Lagoa



0024 Peyto

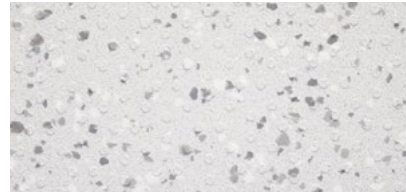


0031 Eacham

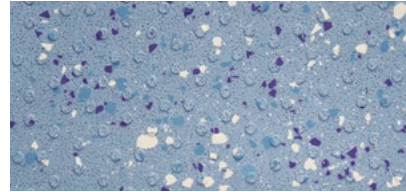
To see the full range - [click here](#)

Tarasafe Ultra H₂O

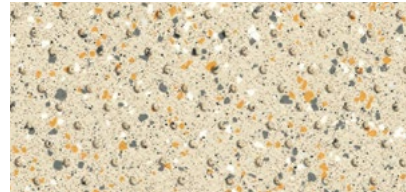
High performance slip resistant safety flooring for wet and dry, barefoot and shod applications, meets 36+ HSE guidelines.



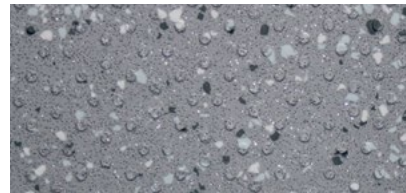
7720 Iceberg



7413 Ocean Blue



7325 Seashore



7746 Stone

To see the full range - [click here](#)

Wall Protection

Selecting the right product

The wall surfaces need to be easy to clean and need to create an impermeable barrier to moisture and bacteria. The wall and corners need to be protected from scuffs and scrapes and direct impact.



1 SureProtect Pure® Wall Cladding - [click here](#)

2 Standard Corner Guards - [click here](#)

1) An innovative corner system

A total and complete solution for installing corners that aids the control of contamination

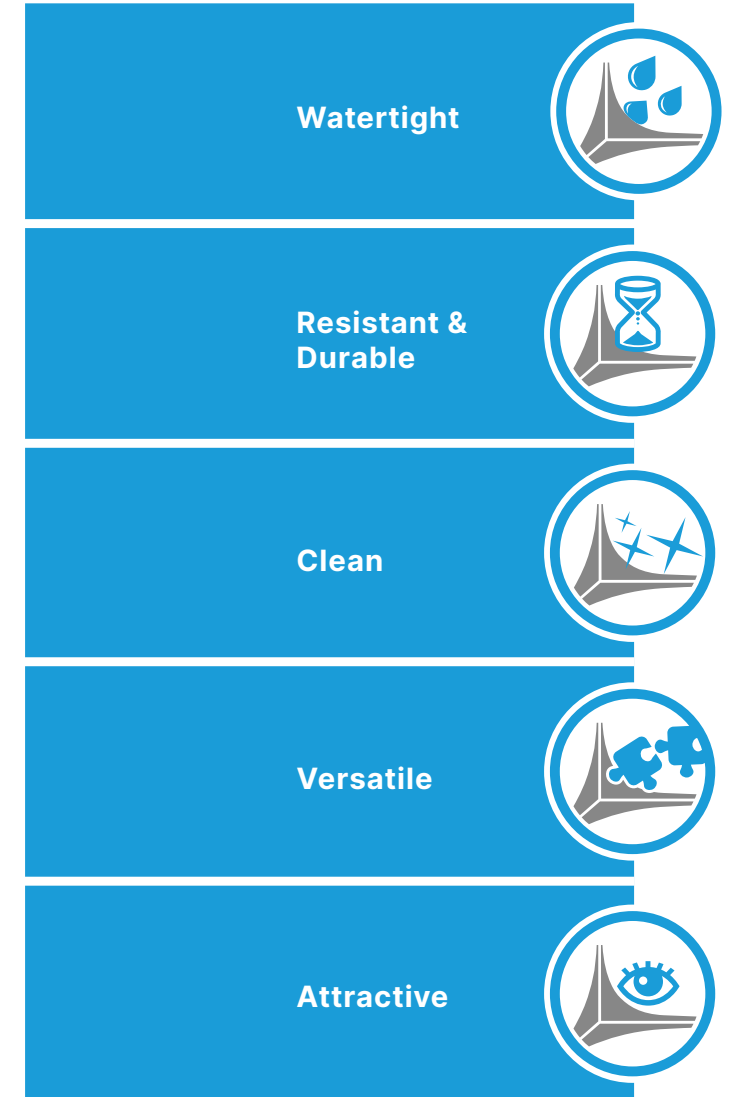
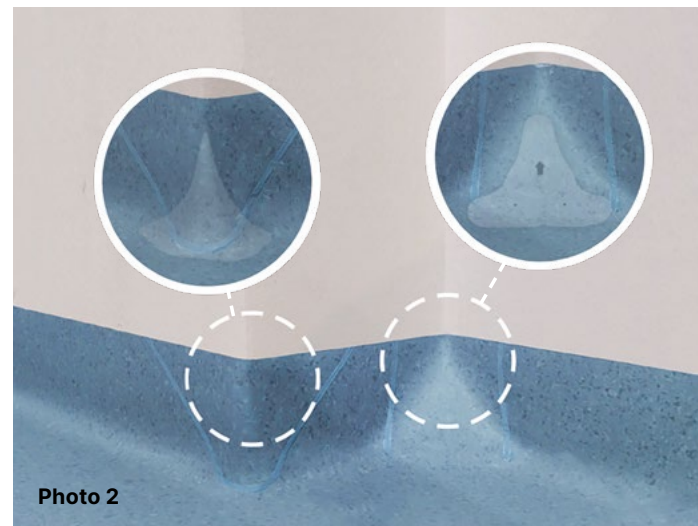
Controlling contamination in general education environments as well as ultra clean areas such as wet rooms, shower rooms, kitchens and laboratories is always a challenge. Corners, in particular, are where most of the imperfections are found:

- Their shape makes cleaning and decontamination difficult
- Poorly welded, they can tear or sag under the weight of traffic
- Weakened by use, they end up losing their water-tightness

In partnership with cleaning professionals, Gerflor has developed Clean Corner System: a patent pending innovative corner solution. Years of research and development have led to Clean Corner System (Gerflor only validate this system with Gerflor products). Thanks to ultra-resistant and versatile profiles (Photo 1), Clean Corner System is suitable for all your projects, and delivers perfect results (Photo 2).

View our Clean Corner System video - [click here](#)

View the Solution - [click here](#)



Watertight

Resistant & Durable

Clean

Versatile

Attractive

A vertical stack of five blue rectangular boxes, each containing a white icon and a feature name. The icons are: 1. Water drops and a corner profile (Watertight). 2. An hourglass and a corner profile (Resistant & Durable). 3. A starburst and a corner profile (Clean). 4. Interlocking puzzle pieces and a corner profile (Versatile). 5. An eye and a corner profile (Attractive).

Innovations for Education Environments

2) Surface treatments for vinyl

Our surface treatments are perfect for education environments with unrivalled levels of chemical & stain resistance, reducing maintenance time and costs.



Evercare™ is an exclusive surface treatment obtained by UV laser cross-linking. This means no waxing or polishing is needed to maintain a floor's appearance or colour brightness, reducing maintenance costs and lowering the environmental impact.



Protecsol® is a surface treatment that delivers stain resistance. It has been tested and approved for over 20 years, is easy to maintain and has no metallisation for life, saving on water and detergents.

For additional information on other surface treatments PUR, Sparclean® and PUR+ please contact us for further details.

View our Stain Resistance Tests video - [click here](#)

Staining Tests
Before cleaning



Betadine



Eosin



Marker

Results After Cleaning
Using a neutral detergent



STAIN 1: Betadine®
Alcoholic Solution



STAIN 2: Eosin



STAIN 3: Permanent Marker®

After 5 Minutes ▶

After 60 Minutes ▶

After 5 Minutes ▶

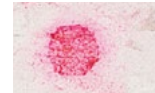
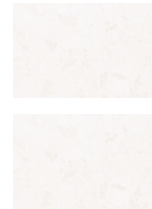
After 60 Minutes ▶

Evercare™
Protecsol® 2

Other
Homogeneous
Sheets

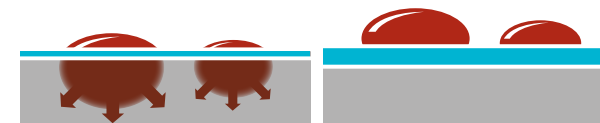
Rubber

VCT



Highly durable: Exclusive surface treatment applied by UV laser cross-linking provides superior durability and an even surface thickness, creating an impenetrable barrier against stains and chemicals. Longer life expectancy.

Water-repellent effect: The surface treatment creates a 100% non-porous barrier to prevent all liquids and chemicals from penetrating the materials, remaining on the surface. Simple and easy stain removal.



Innovations for Education Environments

3) Surface treatments for linoleum

Our surface treatments are perfect for education environments with unrivalled levels of chemical & stain resistance, reducing maintenance time and costs.



New solvent-free surface protection developed exclusively for DLW Linoleum.

Extremely hard wearing due to triple laser UV cross-linking.



Easy to Clean

- Dirt and stain barrier
- Cost effective maintenance
- Easy cleaning with a mop or any modern cleaning equipment

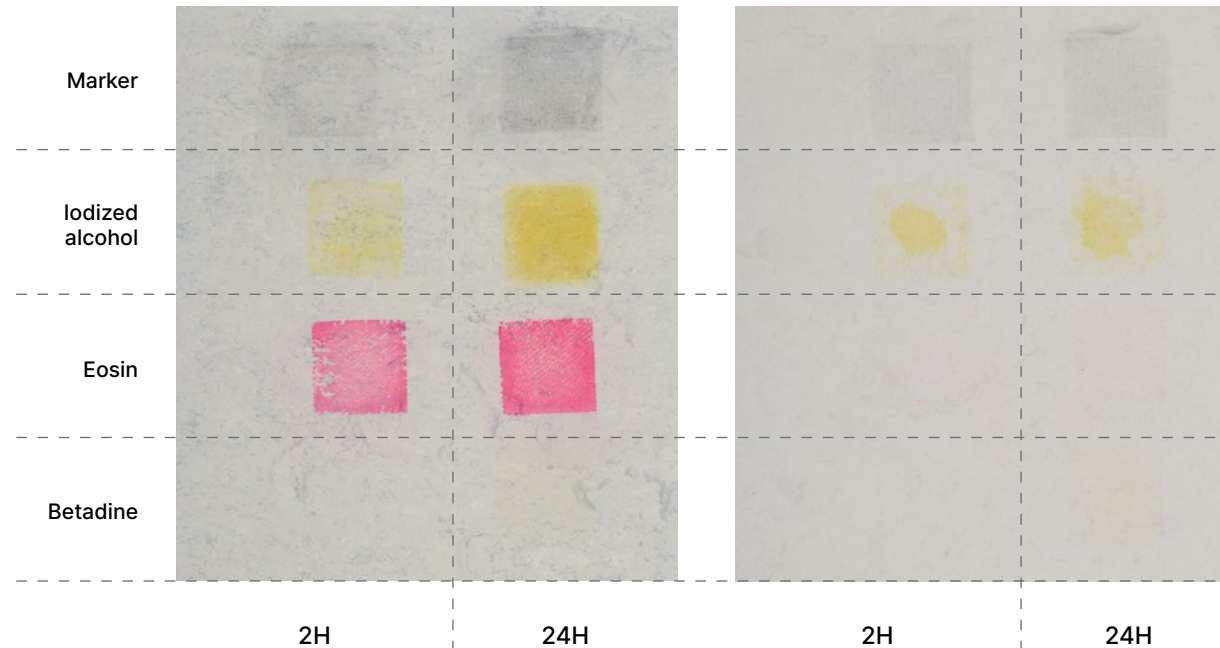
Detailed cleaning protocol available on www.gerfor.com



Standard Linoleum



Neocare™



Brochure Downloads



To download our PDF brochures, click on the links below

[Commercial Flooring Solutions Catalogue](#)

[DLW Brochure](#)

[Wall Protection Systems Catalogue](#)

[Barrier Matting Systems Catalogue](#)

[Stair Edgings & Floor Trims Brochure](#)

A selection of our Case Studies

A selection of our Case Studies

A selection of our Case Studies



Head Office:

Park Green, Macclesfield, Cheshire, SK11 7LZ

Gerflor enquiries

Tel: 01625 428922

E-mail: contractuk@gerflor.com

Website: gerflor.co.uk

Gradus enquiries

Tel: 01625 428922

E-mail: imail@gradus.com

Website: gradus.com