

CLIENT:

SOLUTION:

LOCATION:

EASTLEIGH HOUSING ASSOCIATION

MURAL REVELA & TARASAFE H₂O

SOUTHAMPTON

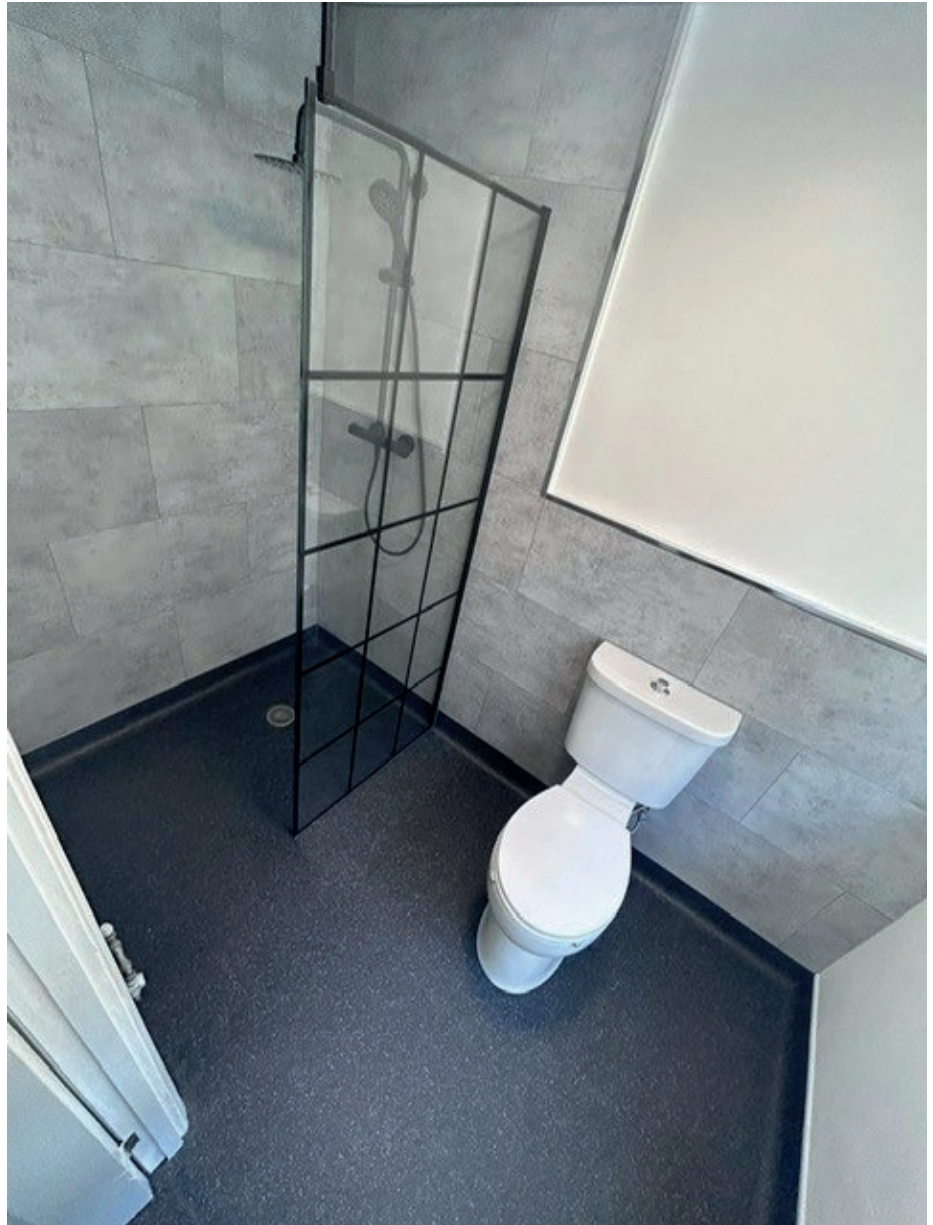
Eastleigh Housing Association specifies Gerflor Mural Revela and Tarasafe H₂O for Social Housing renovations.

Eastleigh Housing Association provides a range of low-cost social housing to the local community for people needing somewhere to live, this is overseen and operated by Eastleigh Borough Council.

When a much-needed bathroom refurbishment was required, it would see international flooring specialist Gerflor supply their new Mural Revela wall covering solution, alongside the new Tarasafe H₂O safety vinyl for a complete fast track renovation. The 'need for speed' would be pivotal, as the client's tenant would be in 'situ' as the wall covering and flooring was being installed.

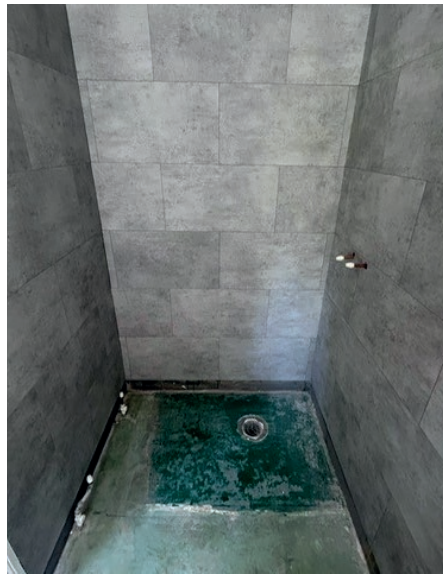
Commenting on the project Tim Linghorn, Gerflor Specification Area Sales Manager, Residential and Housing said, "We have a strong relationship with the council who oversee the Eastleigh Housing Association. During our initial meeting, we presented our Mural Revela wall covering product, which greatly impressed them. They expressed serious interest in considering it, recognising the positive benefits it could offer for their housing stock. Consequently, Gerflor proposed a free trial for an upcoming bathroom refurbishment project."

Tim Linghorn elaborated on the specification choices, noting that their existing relationship with the council played a crucial role. "Gerflor flooring is already used in other council projects, and the new Mural Revela product range introduced further innovation and efficiency, this extremely impressed the council. The main challenge was the need for a fast installation, as the resident would be remaining in the property during the refurbishment, necessitating for a timely completion."



“ The installers and clients are extremely delighted with the reduced fitting times of both Mural Revela wall covering and Tarasafe H₂O safety vinyl. This combined package has led to a much faster handover and has also minimised disruption for the tenants. We would not hesitate to specify Gerflor products again. ”

Dan Burton, Director at Danson Developments



The refurbishment and installation for this project would need to be of the highest quality in order to meet the exceptional standards required by the Housing Association, whilst also being able to complete the renovation works within a very tight timeline. The installation for this transformational project would be the responsibility of Danson Developments Ltd.

Danson Developments Ltd is an experienced and reliable fit-out company. Since being formed in 1996 they have built a reputation as one of the south's leading fit-out companies. This is due to their ability to design and deliver innovative fit-out and refurbishment projects across a range of sectors, helping to inspire staff and engage clients, and transform properties. As an experienced fit-out contractor, they manage every stage of vast variety of projects in an efficient and timely manner. From the initial consultation to the final brush stroke, they take care of the interior fit-out project to save time and money, working 'with' the client rather than 'for' the client to ensure the best possible outcome.

Daniel Burton, Director, Danson Developments Ltd said, "We are preferred contractors for a number of clients who have these types of projects.

"On site we had three fitters who were all 'multi- trade', enabling them to install the Gerflor Mural Revela wall covering, together with providing the plumbing expertise and the specialist floor laying skills to also fit the Gerflor Tarasafe H₂O safety flooring to an extremely high standard."

Daniel Burton emphasised the tight critical timelines for the refurbishment, highlighting that the whole project was started on the Monday and handed back to the client and the tenant at lunchtime on the Wednesday. This rapid turnaround was made possible thanks to the easy installation of the Tarasafe H₂O safety vinyl floor, it was noted for its light weight and flexibility when compared to other wet room vinyl's, with the welds being particularly easy to manage thus reducing any downtime on site.

During the renovation, the Gerflor Mural Revela wall covering was also a fast-track solution and it saved time in the transformation, as it was fitted over the existing ceramic tiles in the bathroom, with no need to remove the existing wall covering surface in place, there was also no waste as the off cuts could be easily recycled, making this solution an innovative and ecofriendly product for the social housing project.

The Housing Association was also impressed with the tongue and groove format of the tiles, which allowed for an even faster installation that could be easily clicked together to renovate the walls quickly and with minimal mess on site.


With this extremely fast turnaround due to the combined specification of Gerflor flooring and wall covering products, the tenant at the Eastleigh Housing Association property was able to remain at home without any disruption to his everyday living.

In conclusion, Tim Lingham commented that, "This is the first time that Eastleigh Housing Association has tested Mural Revela, and they were extremely pleased with the finished results. Following the trial, Mural Revela has been added to the Eastleigh Borough Council specification list, due to its versatility for installers, time-saving benefits, and quick, mess-free installation process."

Dan Burton concluded, "The installers and clients are extremely delighted with the reduced fitting times of both Mural Revela wall covering and Tarasafe H₂O safety vinyl. This combined package has led to a much faster handover and has also minimised disruption for the tenants. We would not hesitate to specify Gerflor products again."

For further information on Gerflor's extensive range of flooring solutions please contact us:

UNITED KINGDOM
 +44 (0) 1625 428 922
 contractuk@gerflor.com
 www.gerflor.co.uk

REPUBLIC OF IRELAND
 +353 (0) 42 966 1431
 gerflorir@gerflor.com
 www.gerflor.ie

